

# The Use of Colour on Roman Marble Sarcophagi

---

**Siotto, Eliana**

*Source / Izvornik:* **ASMOSIA XI, Interdisciplinary Studies on Ancient Stone, Proceedings of the XI International Conference of ASMOSIA, 2018, 773 - 782**

**Conference paper / Rad u zborniku**

*Publication status / Verzija rada:* **Published version / Objavljena verzija rada (izdavačev PDF)**

<https://doi.org/10.31534/XI.asmosia.2015/07.02>

*Permanent link / Trajna poveznica:* <https://urn.nsk.hr/urn:nbn:hr:123:323704>

*Rights / Prava:* [In copyright](#) / [Zaštićeno autorskim pravom.](#)

*Download date / Datum preuzimanja:* **2024-07-12**



*Repository / Repozitorij:*

[FCEAG Repository - Repository of the Faculty of Civil Engineering, Architecture and Geodesy, University of Split](#)



# ASMOSIA XI

Interdisciplinary Studies on Ancient Stone

## PROCEEDINGS

of the XI ASMOSIA Conference, Split 2015

Edited by Daniela Matetić Poljak and Katja Marasović



Interdisciplinary Studies on Ancient Stone  
Proceedings of the XI ASMOSIA Conference (Split 2015)

Publishers:

ARTS ACADEMY IN SPLIT  
UNIVERSITY OF SPLIT

and

UNIVERSITY OF SPLIT  
FACULTY OF CIVIL ENGINEERING,  
ARCHITECTURE AND GEODESY

Technical editor:  
Kate Bošković

English language editor:  
Graham McMaster

Computer pre-press:  
Nikola Križanac

Cover design:  
Mladen Čulić

Cover page:

*Sigma shaped mensa of pavonazzetto marble from Diocletian's palace in Split*

ISBN 978-953-6617-49-4 (Arts Academy in Split)

ISBN 978-953-6116-75-1 (Faculty of Civil Engineering, Architecture and Geodesy)

e-ISBN 978-953-6617-51-7 (Arts Academy in Split)

e-ISBN 978-953-6116-79-9 (Faculty of Civil Engineering, Architecture and Geodesy)

CIP available at the digital catalogue of the University Library in Split, no 170529005



Association for the Study of Marble & Other Stones in Antiquity

# ASMOSIA XI

## Interdisciplinary Studies of Ancient Stone

Proceedings of the Eleventh International Conference of ASMOSIA,  
Split, 18–22 May 2015

Edited by  
Daniela Matetić Poljak  
Katja Marasović



Split, 2018

**Nota bene**

All papers are subjected to an international review.

The quality of the images relies on the quality of the originals provided by the authors.

# CONTENT

<b>PRESENTATION</b> .....	15
<b>NECROLOGY: NORMAN HERZ (1923-2013) by Susan Kane</b> .....	17
<b>1. APPLICATIONS TO SPECIFIC ARCHEOLOGICAL QUESTIONS – USE OF MARBLE</b>	
Hermaphrodites and Sleeping or Reclining Maenads: Production Centres and Quarry Marks <i>Patrizio Pensabene</i> .....	25
First Remarks about the Pavement of the Newly Discovered Mithraeum of the Colored Marbles at Ostia and New Investigations on Roman and Late Roman White and Colored Marbles from Insula IV, IX <i>Massimiliano David, Stefano Succi and Marcello Turci</i> .....	33
Alabaster. Quarrying and Trade in the Roman World: Evidence from Pompeii and Herculaneum <i>Simon J. Barker and Simona Perna</i> .....	45
Recent Work on the Stone at the Villa Arianna and the Villa San Marco (Castellammare di Stabia) and Their Context within the Vesuvian Area <i>Simon J. Barker and J. Clayton Fant</i> .....	65
Marble Wall Decorations from the Imperial Mausoleum (4 <sup>th</sup> C.) and the Basilica of San Lorenzo (5 <sup>th</sup> C.) in Milan: an Update on Colored Marbles in Late Antique Milan <i>Elisabetta Neri, Roberto Bugini and Silvia Gazzoli</i> .....	79
Sarcophagus Lids Sawn from their Chests <i>Dorothy H. Abramitis and John J. Herrmann</i> .....	89
The Re-Use of Monolithic Columns in the Invention and Persistence of Roman Architecture <i>Peter D. De Staebler</i> .....	95
The Trade in Small-Size Statues in the Roman Mediterranean: a Case Study from Alexandria <i>Patrizio Pensabene and Eleonora Gasparini</i> .....	101
The Marble Dedication of Komon, Son of Asklepiades, from Egypt: Material, Provenance, and Reinforcement of Meaning <i>Patricia A. Butz</i> .....	109
Multiple Reuse of Imported Marble Pedestals at Caesarea Maritima in Israel <i>Barbara Burrell</i> .....	117
Iasos and Iasian Marble between the Late Antique and Early Byzantine Eras <i>Diego Peirano</i> .....	123

Thassos, Known Inscriptions with New Data <i>Tony Kozelj and Manuela Wurch-Kozelj</i> .....	131
The Value of Marble in Roman <i>Hispalis</i> : Contextual, Typological and Lithological Analysis of an Assemblage of Large Architectural Elements Recovered at N° 17 Goyeneta Street (Seville, Spain) <i>Ruth Taylor, Oliva Rodríguez, Esther Ontiveros, María Luisa Loza, José Beltrán and Araceli Rodríguez</i> .....	143
<i>Giallo Antico</i> in Context. Distribution, Use and Commercial Actors According to New Stratigraphic Data from the Western Mediterranean (2 <sup>nd</sup> C. Bc – Late 1 <sup>st</sup> C. Ad) <i>Stefan Ardeleanu</i> .....	155
<i>Amethystus</i> : Ancient Properties and Iconographic Selection <i>Luigi Pedroni</i> .....	167
<b>2. PROVENANCE IDENTIFICATION I: (MARBLE)</b>	
Unraveling the Carrara – Göktepe Entanglement <i>Walter Prochaska, Donato Attanasio and Matthias Bruno</i> .....	175
The Marble of Roman Imperial Portraits <i>Donato Attanasio, Matthias Bruno, Walter Prochaska and Ali Bahadır Yavuz</i> .....	185
Tracing Alabaster (Gypsum or Anhydrite) Artwork Using Trace Element Analysis and a Multi-Isotope Approach (Sr, S, O) <i>Lise Leroux, Wolfram Kloppmann, Philippe Bromblet, Catherine Guerrot, Anthony H. Cooper, Pierre-Yves Le Pogam, Dominique Vingtain and Noel Worley</i> .....	195
Roman Monolithic Fountains and Thasian Marble <i>Annewies van den Hoek, Donato Attanasio and John J. Herrmann</i> .....	207
Archaeometric Analysis of the Alabaster Thresholds of Villa A, Oplontis (Torre Annunziata, Italy) and New Sr and Pb Isotopic Data for <i>Alabastro Ghiaccione del Circeo</i> <i>Simon J. Barker, Simona Perna, J. Clayton Fant, Lorenzo Lazzarini and Igor M. Villa</i> .....	215
Roman Villas of Lake Garda and the Occurrence of Coloured Marbles in the Western Part of “Regio X Venetia et Histria” (Northern Italy) <i>Roberto Bugini, Luisa Folli and Elisabetta Roffia</i> .....	231
Calcitic Marble from Thasos in the North Adriatic Basin: Ravenna, Aquileia, and Milan <i>John J. Herrmann, Robert H. Tykot and Annewies van den Hoek</i> .....	239
Characterisation of White Marble Objects from the Temple of Apollo and the House of Augustus (Palatine Hill, Rome) <i>Francesca Giustini, Mauro Brilli, Enrico Gallochio and Patrizio Pensabene</i> .....	247
Study and Archeometric Analysis of the Marble Elements Found in the Roman Theater at Aeclanum (Mirabella Eclano, Avellino - Italy) <i>Antonio Mesisca, Lorenzo Lazzarini, Stefano Cancelliere and Monica Salvadori</i> .....	255

Two Imperial Monuments in Puteoli: Use of Proconnesian Marble in the Domitianic and Trajanic Periods in Campania <i>Irene Bald Romano, Hans Rupprecht Goette, Donato Attanasio and Walter Prochaska</i> .....	267
Coloured Marbles in the Neapolitan Pavements (16 <sup>th</sup> And 17 <sup>th</sup> Centuries): the Church of <i>Santi Severino e Sossio</i> <i>Roberto Bugini, Luisa Folli and Martino Solito</i> .....	275
Roman and Early Byzantine Sarcophagi of Calcitic Marble from Thasos in Italy: Ostia and Siracusa <i>Donato Attanasio, John J. Herrmann, Robert H. Tykot and Annewies van den Hoek</i> .....	281
Revisiting the Origin and Destination of the Late Antique Marzamemi 'Church Wreck' Cargo <i>Justin Leidwanger, Scott H. Pike and Andrew Donnelly</i> .....	291
The Marbles of the Sculptures of Felix Romuliana in Serbia <i>Walter Prochaska and Maja Živić</i> .....	301
Calcitic Marble from Thasos and Proconnesos in Nea Anchialos (Thessaly) and Thessaloniki (Macedonia) <i>Vincent Barbin, John J. Herrmann, Aristotle Mentzos and Annewies van den Hoek</i> .....	311
Architectural Decoration of the Imperial Agora's Porticoes at Iasos <i>Fulvia Bianchi, Donato Attanasio and Walter Prochaska</i> .....	321
The Winged Victory of Samothrace - New Data on the Different Marbles Used for the Monument from the Sanctuary of the Great Gods <i>Annie Blanc, Philippe Blanc and Ludovic Laugier</i> .....	331
Polychrome Marbles from the Theatre of the Sanctuary of Apollo Pythios in Gortyna (Crete) <i>Jacopo Bonetto, Nicolò Mareso and Michele Bueno</i> .....	337
Paul the Silentary, Hagia Sophia, Onyx, Lydia, and Breccia Corallina <i>John J. Herrmann and Annewies van den Hoek</i> .....	345
Incrustations from Colonia Ulpia Traiana (Near Modern Xanten, Germany) <i>Vilma Ruppiniè and Ulrich Schüssler</i> .....	351
Stone Objects from Vindobona (Austria) – Petrological Characterization and Provenance of Local Stone in a Historico-Economical Setting <i>Andreas Rohatsch, Michaela Kronberger, Sophie Insulander, Martin Mosser and Barbara Hodits</i> .....	363
Marbles Discovered on the Site of the Forum of Vaison-la-Romaine (Vaucluse, France): Preliminary Results <i>Elsa Roux, Jean-Marc Mignon, Philippe Blanc and Annie Blanc</i> .....	373
Updated Characterisation of White Saint-Béat Marble. Discrimination Parameters from Classical Marbles <i>Hernando Royo Plumed, Pilar Lapeunte, José Antonio Cuchí, Mauro Brillì and Marie-Claire Savin</i> .....	379

Grey and Greyish Banded Marbles from the Estremoz Anticline in Lusitania <i>Pilar Lapuente, Trinidad Nogales-Basarrate, Hernando Royo Plumed, Mauro Brilli and Marie-Claire Savin</i> .....	391
New Data on Spanish Marbles: the Case of <i>Gallaecia</i> (NW Spain) <i>Anna Gutiérrez García-M., Hernando Royo Plumed and Silvia González Soutelo</i> .....	401
A New Roman Imperial Relief Said to Be from Southern Spain: Problems of Style, Iconography, and Marble Type in Determining Provenance <i>John Pollini, Pilar Lapuente, Trinidad Nogales-Basarrate and Jerry Podany</i> .....	413
Reuse of the <i>Marmorata</i> from the Late Roman Palatial Building at Carranque (Toledo, Spain) in the Visigothic Necropolis <i>Virginia García-Entero, Anna Gutiérrez García-M. and Sergio Vidal Álvarez</i> .....	427
Imperial Porphyry in Roman Britain <i>David F. Williams</i> .....	435
Recycling of Marble: Apollonia/Sozousa/Arsuf (Israel) as a Case Study <i>Moshe Fischer, Dimitris Tambakopoulos and Yannis Maniatis</i> .....	443
Thasian Connections Overseas: Sculpture in the Cyrene Museum (Libya) Made of Dolomitic Marble from Thasos <i>John J. Herrmann and Donato Attanasio</i> .....	457
Marble on Rome's Southwestern Frontier: Thamugadi and Lambaesis <i>Robert H. Tykot, Ouahiba Bouzidi, John J. Herrmann and Annewies van den Hoek</i> .....	467
Marble and Sculpture at Lepcis Magna (Tripolitania, Libya): a Preliminary Study Concerning Origin and Workshops <i>Luisa Musso, Laura Buccino, Matthias Bruno, Donato Attanasio and Walter Prochaska</i> .....	481
The Pentelic Marble in the Carnegie Museum of Art Hall of Sculpture, Pittsburgh, Pennsylvania <i>Albert D. Kollar</i> .....	491
Analysis of Classical Marble Sculptures in the Michael C. Carlos Museum, Emory University, Atlanta <i>Robert H. Tykot, John J. Herrmann, Renée Stein, Jasper Gaunt, Susan Blevins and Anne R. Skinner</i> .....	501
<b>3. PROVENANCE IDENTIFICATION II: (OTHER STONES)</b>	
Aphrodisias and the Regional Marble Trade. The <i>Scaenae Frons</i> of the Theatre at Nysa <i>Natalia Toma</i> .....	513
The Stones of Felix Romuliana (Gamzigrad, Serbia) <i>Bojan Djurić, Divna Jovanović, Stefan Pop Lazić and Walter Prochaska</i> .....	523
Aspects of Characterisation of Stone Monuments from Southern Pannonia <i>Branka Migotti</i> .....	537



The Budakalász Travertine Production <i>Bojan Djurić, Sándor Kele and Igor Rižnar</i> .....	545
Stone Monuments from Carnuntum and Surrounding Areas (Austria) – Petrological Characterization and Quarry Location in a Historical Context <i>Gabrielle Kremer, Isabella Kitz, Beatrix Moshhammer, Maria Heinrich and Erich Draganits</i> .....	557
Espejón Limestone and Conglomerate (Soria, Spain): Archaeometric Characterization, Quarrying and Use in Roman Times <i>Virginia García-Entero, Anna Gutiérrez García-M, Sergio Vidal Álvarez, María J. Peréx Agorreta and Eva Zarco Martínez</i> .....	567
The Use of Alcover Stone in Roman Times ( <i>Tarraco, Hispania Citerior</i> ). Contributions to the <i>Officina Lapidaria Tarraconensis</i> <i>Diana Gorostidi Pi, Jordi López Vilar and Anna Gutiérrez García-M.</i> .....	577
<b>4. ADVANCES IN PROVENANCE TECHNIQUES, METHODOLOGIES AND DATABASES</b>	
Grainautline – a Supervised Grain Boundary Extraction Tool Supported by Image Processing and Pattern Recognition <i>Kristóf Csorba, Lilla Barancsuk, Balázs Székely and Judit Zöldföldi</i> .....	587
A Database and GIS Project about Quarrying, Circulation and Use of Stone During the Roman Age in <i>Regio X - Venetia et Histria</i> . The Case Study of the Euganean Trachyte <i>Caterine Previato and Arturo Zara</i> .....	597
<b>5. QUARRIES AND GEOLOGY</b>	
The Distribution of Troad Granite Columns as Evidence for Reconstructing the Management of Their Production <i>Patrizio Pensabene, Javier Á. Domingo and Isabel Rodà</i> .....	613
Ancient Quarries and Stonemasonry in Northern Choria Considiana <i>Hale Güney</i> .....	621
Polychromy in Larisaeon Quarries and its Relation to Architectural Conception <i>Gizem Mater and Ertunç Denктаş</i> .....	633
Euromos of Caria: the Origin of an Hitherto Unknown Grey Veined Stepped Marble of Roman Antiquity <i>Matthias Bruno, Donato Attanasio, Walter Prochaska and Ali Bahadır Yavuz</i> .....	639
Unknown Painted Quarry Inscriptions from Bacakale at <i>Docimium</i> (Turkey) <i>Matthias Bruno</i> .....	651
The Green Schist Marble Stone of Jebel El Hairech (North West of Tunisia): a Multi-Analytical Approach and its Uses in Antiquity <i>Ameur Younès, Mohamed Gaied and Wissem Gallala</i> .....	659
Building Materials and the Ancient Quarries at <i>Thamugadi</i> (East of Algeria), Case Study: Sandstone and Limestone <i>Younès Rezkallah and Ramdane Marmi</i> .....	673

The Local Quarries of the Ancient Roman City of <i>Valeria</i> (Cuenca, Spain) <i>Javier Atienza Fuente</i> .....	683
The Stone and Ancient Quarries of Montjuïc Mountain (Barcelona, Spain) <i>Aureli Álvarez</i> .....	693
<i>Notae Lapidinarum</i> : Preliminary Considerations about the Quarry Marks from the Provincial Forum of <i>Tarraco</i> <i>Maria Serena Vinci</i> .....	699
The Different Steps of the Rough-Hewing on a Monumental Sculpture at the Greek Archaic Period: the Unfinished Kouros of Thasos <i>Danièle Braunstein</i> .....	711
A Review of Copying Techniques in Greco-Roman Sculpture <i>Séverine Moureaud</i> .....	717
Labour Forces at Imperial Quarries <i>Ben Russell</i> .....	733
Social Position of Craftsmen inside the Stone and Marble Processing Trades in the Light of Diocletian's Edict on Prices <i>Krešimir Bosnić and Branko Matulić</i> .....	741
<b>6. STONE PROPERTIES, WEATHERING EFFECTS AND RESTORATION, AS RELATED TO DIAGNOSIS PROBLEMS, MATCHING OF STONE FRAGMENTS AND AUTHENTICITY</b>	
Methods of Consolidation and Protection of Pentelic Marble <i>Maria Apostolopoulou, Elissavet Drakopoulou, Maria Karoglou and Asterios Bakolas</i> .....	749
<b>7. PIGMENTS AND PAINTINGS ON MARBLE</b>	
Painting and Sculpture Conservation in Two Gallo-Roman Temples in Picardy (France): Champlieu and Pont-Sainte-Maxence <i>Véronique Brunet-Gaston and Christophe Gaston</i> .....	763
The Use of Colour on Roman Marble Sarcophagi <i>Eliana Siotto</i> .....	773
New Evidence for Ancient Gilding and Historic Restorations on a Portrait of Antinous in the San Antonio Museum of Art <i>Jessica Powers, Mark Abbe, Michelle Bushey and Scott H. Pike</i> .....	783
Schists and Pigments from Ancient Swat (Khyber Pukhtunkhwa, Pakistan) <i>Francesco Mariottini, Gianluca Vignaroli, Maurizio Mariottini and Mauro Roma</i> .....	793
<b>8. SPECIAL THEME SESSION: „THE USE OF MARBLE AND LIMESTONE IN THE ADRIATIC BASIN IN ANTIQUITY”</b>	
Marble Sarcophagi of Roman Dalmatia Material – Provenance – Workmanship <i>Guntram Koch</i> .....	809

Funerary Monuments and Quarry Management in Middle Dalmatia <i>Nenad Cambi</i> .....	827
Marble Revetments of Diocletian's Palace <i>Katja Marasović and Vinka Marinković</i> .....	839
The Use of Limestones as Construction Materials for the Mosaics of Diocletian's Palace <i>Branko Matulić, Domagoj Mudronja and Krešimir Bosnić</i> .....	855
Restoration of the Peristyle of Diocletian's Palace in Split <i>Goran Nikšić</i> .....	863
Marble Slabs Used at the Archaeological Site of Sorna near Poreč Istria – Croatia <i>Đeni Gobić-Bravar</i> .....	871
Ancient Marbles from the Villa in Verige Bay, Brijuni Island, Croatia <i>Mira Pavletić and Đeni Gobić-Bravar</i> .....	879
Notes on Early Christian Ambos and Altars in the Light of some Fragments from the Islands of Pag and Rab <i>Mirja Jarak</i> .....	887
The Marbles in the Chapel of the Blessed John of Trogir in the Cathedral of St. Lawrence at Trogir <i>Đeni Gobić-Bravar and Daniela Matetić Poljak</i> .....	899
The Use of Limestone in the Roman Province of Dalmatia <i>Edisa Lozić and Igor Rižnar</i> .....	915
The Extraction and Use of Limestone in Istria in Antiquity <i>Klara Buršić-Matijašić and Robert Matijašić</i> .....	925
Aurisina Limestone in the Roman Age: from Karst Quarries to the Cities of the Adriatic Basin <i>Caterina Previato</i> .....	933
The Remains of Infrastructural Facilities of the Ancient Quarries on Zadar Islands (Croatia) <i>Mate Parica</i> .....	941
The Impact of Local Geomorphological and Geological Features of the Area for the Construction of the Burnum Amphitheatre <i>Miroslav Glavičić and Uroš Stepišnik</i> .....	951
Roman Quarry Klis Kosa near Salona <i>Ivan Alduk</i> .....	957
Marmore Lavdata Brattia <i>Miona Miliša and Vinka Marinković</i> .....	963
Quarries of the Lumbarda Archipelago <i>Ivka Lipanović and Vinka Marinković</i> .....	979

Island of Korčula – Importer and Exporter of Stone in Antiquity <i>Mate Parica and Igor Borzić</i> .....	985
Faux Marbling Motifs in Early Christian Frescoes in Central and South Dalmatia: Preliminary Report <i>Tonči Borovac, Antonija Gluhan and Nikola Radošević</i> .....	995
<b>INDEX OF AUTHORS</b> .....	1009

# THE USE OF COLOUR ON ROMAN MARBLE SARCOPHAGI

Eliana Siotto

Visual Computing Lab, ISTI – CNR, Pisa, Italy (eliana.siotto@isti.cnr.it)

## Abstract

The objective of this study is to improve the knowledge of polychrome Roman sarcophagi by showing the first observations on the subject achieved by a combination of archaeological research and scientific results. The colour palette and the painting techniques used are demonstrated: how the extant colours were often obtained from a careful mixture of pigments or overlapping colours, either directly applied to the marble surface or, less frequently, over a whitish ground layer. The Roman painters paid attention to such pictorial effects as the lighting and rendering of minimal details, to achieve a realistic effect. The paper also illuminates some recurring technical and stylistic elements, regardless of the iconographic themes and the historical period. Therefore, the ancient polychromy of Roman marble sarcophagi, where it is still well preserved, appears to be an art of great refinement and technical sophistication, at the same level as the marble carving.

## Keywords

roman marble sarcophagi, polychromy, pictorial paradigms

## Introduction

Roman marble sarcophagi have been systematically studied from a typological, stylistic and iconographic point of view since the late nineteenth century (from the exhaustive bibliography we will remember ASR; WILPERT 1929-36; DEICHMANN *et al.* 1967; GERKE 1940; KOCH, SICHTERMANN 1982; ZANKER, EWALD 2012). Several studies also concerned the marble used, the production sites, and the issues related to their use and re-use from Late Antiquity (ANDREAE, SETTIS 1983 with references). Conversely, the study of polychromy (colour and gilding) has received less attention, producing less knowledge of the pigments, dyes, and binders used by Roman artists, and of the pictorial styles and the techniques used to apply both colour and gilding (SIOTTO 2017, 1-26). For this reason, the considerations arrived at by Pietrogrande (PIETROGRANDE 1932), Gütschow (GÜTSCHOW 1938) and Reuterswärd (REUTERSWÄRD 1960, 227-250) from the first half of the last century are fundamental, although they are based on direct visual inspection and not supported by

scientific analysis. However, in recent years, a renewed interest in ancient polychromy has generated several research projects, exhibitions (BRINKMANN *et al.* 2004; PANZANELLI *et al.* 2008; ØSTERGAARD 2010) and also some analytical publications relating to Roman marble sarcophagi (LIVERANI 2010, SARGENT 2011, SIOTTO 2017).

A methodological and multidisciplinary approach for the study of preserved traces of colour on Roman marble sarcophagi can provide valuable information for fully understanding this class of artefacts. Going in this direction I identified and catalogued eighty Roman sarcophagi, that showed evidence of colour and gilding, and which are located in the Musei Vaticani, the Museo Nazionale Romano and the Musei Capitolini collections. These sarcophagi were examined by naked eye or through a magnifying glass and stereomicroscope. Some of these sarcophagi – preserved in the Musei Vaticani and the Museo Nazionale Romano – were selected as case studies and submitted for further detailed scientific investigations. They were selected either because they had some special polychrome features or because they had polychrome features in common with other sarcophagi (SIOTTO 2013, 55-59, 84-88; SIOTTO 2017, 27-30).

Starting from a careful direct visual inspection and archaeological-historical research, the technical examination was based on the application of multispectral imaging (ultraviolet-UV, infrared-IR, visible-induced IR luminescence-VIL, ultraviolet-induced (visible) luminescence-UVL), spectroscopic and elemental analysis (Fourier-transform infrared spectroscopy-FTIR, X-ray fluorescence-XRF). However, since various materials and structural layers are often applied to the marble, micro-invasive techniques (optical petrographic microscopy-OPM, scanning electron microscope and energy dispersive X-ray spectrometer-sem/eds, and Raman spectroscopy) were necessary for the scientific analysis of polychrome traces. The final step consisted of polychrome surface acquisition by colour-calibrated 2D images and, in some selected cases, 3D digitalization of the artefact (SIOTTO *et al.* 2015).

## Colour palette and pigments

The systematic and multidisciplinary approach adopted (SIOTTO 2013; SIOTTO *et al.* 2015) has generated the first scientific identification of artist's paint colours used to decorate Roman marble sarcophagi made in Rome from the first half of the 2<sup>nd</sup> century to the end of



Natural inorganic pigments	Artificial inorganic pigments	Natural and artificial organic pigments	Organic dyes
Iron oxides and hydroxides	Egyptian blue	Carbon black	Rose madder lake
Haematite	Red lead ( <i>cerussa usta</i> )	Bone black	
Cinnabar ( <i>minium</i> )	White lime		

Fig. 1. The table shows the natural and artificial inorganic and organic pigments and the organic dyes found on the examined Roman marble sarcophagi



Fig. 2. A Christ's tunic detail on the so-called 'polychrome slab'; here apparently green colour paints the parallel vertical and horizontal bands. The macro-digital image proves that green colour was originally blue (MNR-PM invv. 67606, 67607)

the 4<sup>th</sup> century AD. The range of colours used is quite wide and the pigments identified (Fig. 1) were representative of the ancient painting context of the Mediterranean area (BRINKMANN 2004). In particular, it was possible to recognize natural inorganic pigments, such as yellow and red ochres, haematite and mercury sulphide (cinnabar); artificial inorganic pigments, such as Egyptian blue, red lead and white lime; organic pigments, such as carbon black and bone black, and, in the end, organic dyes such as red vegetal lake (SIOTTO 2017, 33-45).

Direct visual inspection supported by portable microscopy clearly showed that red is the predominant colour. It has been often considered as a ground layer for gilding instead of a colour in its own right (REUTERSWÄRD 1960, 239). This preservation is probably due to the fact that iron oxide and hydroxide pigments, widely used since ancient times, are more stable to light and moisture (SIOTTO 2017, 47-53). The same features are also found in Egyptian blue, which is still visible on many sarcophagi examined (SIOTTO 2013, 68-69; SIOTTO

2017, 49). On the other hand, white lead, which is an artificial pigment widely used in Hellenistic sculpture as substrate for the paint colour (BRÉCOULAKI 2000; BRÉCOULAKI, PERDIKATIS 2002; BOURGEOIS, JOCKEY 2010 with previous reports) and as colour in some Roman sculptures (ØSTERGAARD 2010A), was not identified in the micro-samples examined. Similarly, I did not find green traces or pigments (such as malachite) except for those visible on the so-called 'polychrome slab' with Christological scenes from the New Testament (Fig. 2) at the Museo Nazionale Romano – Palazzo Massimo (invv. 67606, 67607), which is dated to the end of the 3<sup>rd</sup> century and the early 4<sup>th</sup> century, 290-310 AD (SAPELLI 2002 with references).

Pietrogrande, in his handwritten notes of the thirties published by Marina Sapelli, noted blue traces instead of green (SAPELLI 2002, attachment). Some analyses performed by Sapelli's team during its last restoration at the end of the 1990s, unfortunately, did not lead to clear results. She considered that the green was made of





Fig. 3.  
The details of Victoria right wing show the original and secondary paintings that have affected the *Ulpia Domnina*'s sarcophagus. Here, we can also see that her flight feather is painted red, whilst the short feathers are blue like a well-known conventional 'pictorial paradigm' (MNR-TD inv. 125891)

copper, which was intentionally used as a ground layer for the gold leaf to give a different emphasis to the overlying gold (SAPELLI 2002, 194). In this respect, it is interesting that Reiner Sörries and Ulrike Lange did not consider grey-green and grey-blue as real colours but as a degraded state of silver (LANGE, SÖRRIES 1986, 14).

The current location of the 'polychrome slab' – which hangs high on a wall behind the sarcophagus dedicated to *Marcus Claudianus* (MNR-PM inv. 455) – makes it difficult to perform scientific analyses such as, for example, visible-induced infrared luminescence (VIL). However, a series of macro-digital images validated the Pietrogrande hypothesis regarding the blue (Fig. 2), presumably Egyptian blue. In fact, green traces, identified by VIL analysis as Egyptian blue, have been detected on the vertical and parallel bands of the central Cupid's tunic on the garlands of a sarcophagus at the Ny Carlsberg Glyptotek of Copenhagen, NCG inv. 2468 (SARGENT 2011, 22 fig. 10; SIOTTO 2017, 50-51).

Generally, the pigments preserved on the examined sarcophagi have been used in some cases pure or, presumably, combined with inert charges such as calcite or ochre; in other cases, they were mixed together in order to obtain different shades. Egyptian blue was mixed with bone black (SIOTTO *et al.* 2015A; SIOTTO *et al.* 2015B) or haematite with gypsum, Egyptian blue and rose madder lake (SIOTTO *et al.* 2015) but, more often, iron oxides and hydroxides were combined with red lead (AUGUSTI 1967, 116; SIOTTO 2017, 55-59). In some sarcophagi dating to the second half of the 3<sup>rd</sup> century AD, I also frequently revealed a mixture of yellow and red ochres or, in some cases, their overlapping through the application of broad brushstrokes.

In particular, this can be seen in the hair of figures, and in the manes and tails of lions and horses (Fig. 6).

Regarding the colour application techniques, it was observed that colour is usually applied directly onto the marble surface, but in some cases (approx. 7.5 percent) traces of colour are visible over a whitish substrate with fine dark or red grains working as ground layer (SIOTTO 2013, 158-161; SIOTTO 2017, 61). Concerning this, a case of an ancient re-painting was scientifically documented, on the *Ulpia Domnina* sarcophagus (Fig. 3) at the Museo Nazionale Romano – Terme di Diocleziano, inv. 125891 (SIOTTO 2013, 213-229; SIOTTO *et al.* 2015A; SIOTTO *et al.* 2015B). Differently, a simultaneous use of two pictorial techniques is probably identified on the so-called 'Annona sarcophagus' (Museo Nazionale Romano – Palazzo Massimo inv. 40799) and in the sarcophagus with Dionysus and Ariadne (Museo Nazionale Romano – Terme di Diocleziano inv. 124682). It is also interesting to observe that both the last sarcophagi seem to have the figurative elements completely polychrome (SIOTTO *et al.* 2015; SIOTTO 2017, 73-78).

### Colour overlapping and pictorial effects

The overlapping of colours is well demonstrated in some sarcophagi of the Tetrarch period with representations related to bucolic and Christological subjects such as the so-called 'Lateranense no. 150 sarcophagus' (Musei Vaticani inv. 31485) or the sarcophagus dedicated to *Iulius Achilleus* (Museo Nazionale Romano – Terme di Diocleziano inv. 125802) or, again, the above mentioned 'polychrome slab'. In all these cases, wide lines of



Fig. 4.  
The details show thin red lines overlapped to diluted and large yellow lines to highlight and draw some elements through the colour on the 'polychrome slab' (MNR-PM inv. 67606, 67607)



Fig. 5.  
Polychrome details show red colour superimposed on yellow layer to highlight the Ionic and Lesbian *kymàtia*, and the wood roof elements of the shepherd's hut on the bucolic sarcophagus dedicated to *Iulius Achilleus* (MNR-TD inv. 125802)

diluted yellow ochre have been used as a substrate for very thin lines of dense red ochre, which highlight minute details such as eyelashes and eyebrows (Fig. 4). These thin lines of dense red ochre on lines of diluted yellow ochre have also been used to paint bracelets (*armillae*) or some leather details such as saddlebags and shoelaces or, again, wooden elements (Fig. 4) such as tree bark, chariot spokes, sticks, hoes and spades (SIOTTO 2017, 159).

Some details can also be seen on the lid with a banquet scene discovered in the Vatican necropolis of Santa Rosa, Musei Vaticani inv. 52198, 52228 (SIOTTO 2013, 79-80) and on the garlands sarcophagus at the Ny Carlsberg Glyptothek of Copenhagen, inv. 2468 (SARGENT 2011), both dating to the end of the 3<sup>rd</sup> century AD (SIOTTO 2017, 135).

Another case of red overlapping with yellow recurs in the painting of the Ionic *kymàtion* and, sometimes, of the Lesbian *kymàtion*; this is discernible, for example, in the above mentioned sarcophagus with bucolic scenes dedicated to *Iulius Achilleus* (Fig. 5; SIOTTO 2013, 77-78).

The use of overlapping colours is also visible in the painting of horizontal and vertical bands on *parapètasma* and hems on garments. That, for example, is well documented from analytical results gathered on the *para-pètasma* and the hem of *Annona*'s *palla* in the 'Annona sarcophagus' (MNR-TD inv. 40799), dated to the last third of the 3<sup>rd</sup> century, 270-280 AD (SIOTTO *et al.* 2015; SIOTTO 2017, 159-161).

In some sarcophagi dating to the second half of the 3<sup>rd</sup> century, the combination of some colours was also





Fig. 6.  
Red and yellow have been used to create chiaroscuro effects on the lion mane and horse tail in the so-called 'Conservatori sarcophagus' (MC inv. 1378)



Fig. 7.  
Black colour was superimposed on red to highlight chiaroscuro contrast on the masks hair, shave and features face on the lid's Dionysian sarcophagus (MNR-TD inv. 124736)

used to create effects of light and shade, which in turn highlight their brilliance and contrast as well as the sense of relief depth. This is the case, for example, of a strigilated *lenòs* sarcophagus with portrait and groups of lion and victim (fawn) at the corners, and a large rectangular lid terminating in semi-circular antefixes (Museo Nazionale Romano – Terme di Diocleziano, inv. 124745) where red and yellow ochre have been used to create the palmettes with only the use of colour on the lid antefixes and the male lions' manes. The same use of colours to generate chiaroscuro effects is also visible in some Dionysian sarcophagi dated at the end of the 2<sup>nd</sup> century as, for example, the so-called 'Conservatori sarcophagus' in the Musei Capitolini, inv. 1378 (PIETROGRANDE 1932). Here, the combination of red and yellow ochres is well-preserved on the lion's mane and the horse's mane and tail (Fig. 6; SIOTTO 2017, 163).

Light and dark effects, again made of yellow and red ochres, are also visible on the grapes trampled by three Cupids in the fragment of a sarcophagus stored in the warehouses of the Museo Nazionale Romano – Terme di Diocleziano, inv. 9194. This element was also found by Sargent on a sarcophagus with garlands, NCG inv. 2468 (SARGENT 2011, 33), however the 'painting styles' are very different despite the two artefacts dating to the end of the 3<sup>rd</sup> century (SIOTTO 2017, 164).

Even the use of black applied over red could be employed with the intention of making a chiaroscuro effect as shown, for example, on the beards and hair of the sarcophagus lid with Dionysian procession (Fig. 7) in the Museo Nazionale Romano – Terme di Diocleziano (inv. 124736), which is dated to the second quarter of the 2<sup>nd</sup> century, 130-138 AD (SIOTTO 2017, 166-169).



Fig. 8. The polychrome details show that bright pink is ordinarily used to paint the inner parts of mouth, nostrils, lachrymal ducts (and blood that comes out of the wounds) on Roman marble sarcophagi from the early 2<sup>nd</sup> century to the late 4<sup>th</sup> century AD; this correspond with a documented 'pictorial paradigm'

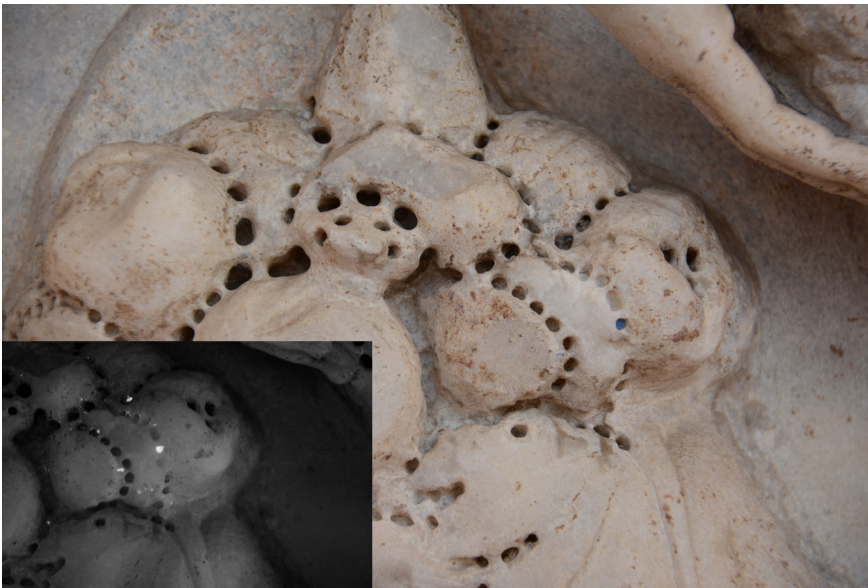


Fig. 9. The leaves are usually painted blue instead of green; the VIL image (at left) shows the glowing white particles characteristic of Egyptian blue pigment. Differently, the fruits are always coloured red and yellow as still visible on the *Ulpia Domnina's* sarcophagus (MNR-TD inv. 125891)

### Pictorial paradigms

At the moment, there are not enough polychrome traces to enable one to understand or scientifically determine if the colour had an ideological meaning in the lives the ancients. It is also very difficult to know the message that the colour may have been able to communicate to those who visited the graves, as is well-evidenced in iconographic representations (ZANKER, EWALD 2012 with references). However, the analytical study of this well-defined archaeological class of artefacts with a known historical period and production place (Roman marble sarcophagi made a Rome from the first half of the 2<sup>nd</sup> century to the end of the 4<sup>th</sup> century AD) has enabled me to detect some pictorial details that were always

painted with the same colours and methods which we define as 'pictorial paradigms'.

Bright pink was ordinarily used to paint the inner parts of mouth, nostrils, lachrymal ducts and blood from wounds (Fig. 8). Generally, this was a red organic colorant used pure or combined with pigments such as haematite, Egyptian blue, etc. This use of colour represents a pictorial paradigm identified on the Roman sarcophagi from the early 2<sup>nd</sup> century to the late 4<sup>th</sup> century (SIOTTO 2017, 99).

The same use of this colour has been identified in Roman sculpture (SARGENT, THERKILDSEN 2010, 20 fig. 10; VERRI *et al.* 2010, 46-48; SKOVMOELLER, THERKILDSEN 2011, 35-36; SIOTTO 2017, 99). A similar bright pink was used to paint the flames of torches, altars and *thymiateria* as respectively detected, for





Fig. 10. The metallic elements are usually painted blue, while the wood objects are red (and yellow) on Roman marble sarcophagi from the early 2<sup>nd</sup> century to the late 4<sup>th</sup> century AD; this correspond with a 'pictorial paradigm'

example, on the sarcophagus with Victories holding a clypeus and seasonal Genii with *Oceanus* and *Tellus* in the Necropolis of Santa Rosa in the Vaticano, inv. 52198 (SIOTTO 2017, 102-103), on the front of sarcophagus of *Olympus Antistianus* in the San Panfilo Catacomb (AMBROGI 2008) and on the 'Annona sarcophagus' (SIOTTO *et al.* 2015).

The way in which decorative details are rendered, such as fruit, leaves, wreaths and trees, seems to follow standardised rules. Indeed, the fruit is always painted red with shades created by yellow touches; whilst the leaves are coloured blue such as oak and laurel wreaths, garlands and, finally, in the external and inner outlines of trees. Visible-induced infrared luminescence (VIL) analysis enabled us to detect the presence of Egyptian blue showing the distribution of its glowing white particles (Fig. 9) on the aforementioned vegetable elements (SIOTTO 2017, 103-107).

Metallic elements such as the tips of spears, shields, helmets and wheel rims of chariots are always coloured in blue. Wooden objects and leather harnesses on the other hand are often painted in different shades of red and yellow, sometimes mixed or overlapped with each other. This is visible (Fig. 10), for example, in the so-called 'Belvedere sarcophagus' with *clementia* scene (Musei Vaticani inv.

942), which is dated to the last quarter of the 2<sup>nd</sup> century as well as in a sarcophagus fragment with wagon (Musei Vaticani inv. 31554), which is dated to the last quarter of the 3<sup>rd</sup> century (SIOTTO 2017, 107-108).

Another pictorial element that often recurs on the sarcophagi of the 3<sup>rd</sup> century is the use of vertical and horizontal parallel bands coloured red, yellow or blue to decorate the tunics (Fig. 2). This decorative use of colour seems to be a well-established paradigm in the pictorial iconography of catacombs and can already be seen in the artistic production of the Etruscan (SIOTTO 2017, 111-113).

The rendering of the wings of Cupids and Victories is a well-known conventional pictorial pattern. Their flight feathers are always painted red, whilst the short feathers are blue (Fig. 3) and, sometimes, yellow is also visible. In some lucky cases the gilding is preserved on the top (GÜTSCHOW 1938, 219, 222 note 4; REUTER-SWÄRD 1960, 239; KOCH, SICHTERMANN 1982, 87; SIOTTO 2017, 108-111).

Finally, the most recurring element is the highlighting of the outlines of figures, animals and objects with red contour lines of various widths on the background of the relief (Fig. 11; PIETROGRANDE 1932; SIOTTO 2017, 116).



Fig. 11. Red colour is commonly used to outline, along the background, the body shapes of relief as shown on the *Ulpia Domnina's* sarcophagus (MNR-TD inv. 125891); this correspond with a known 'pictorial paradigm'

## Conclusions

The combination of archaeological data with diagnostic analysis has enabled the identification of the more frequently preserved colours and some pigments and dyes used for painting on the Roman marble sarcophagi made in Rome from the first half of the 2<sup>nd</sup> century to the end of the 4<sup>th</sup> century. Although the eighty sarcophagi analysed preserve only partial traces of polychromy, some pictorial elements certify an effort toward to naturalism. These elements are the presence of light and shade effects made by using yellow and red or black/blue and red, the shades of colour values obtained by adding white or black pigments and, in some sarcophagi, the painting of figures through colours close to the naturalistic (e.g. hair by red and yellow ochre, flesh in pink shades, lips in shades of red-brown with the internal part of bright pink, etc.). Other elements attest the use of colour to accentuate relief plasticity. Especially, they used to provide outlines in continuous lines (wide from 0.5 to 2 cm) for figures, animals and objects or to paint the facial features of people and animals or, even, the garments, in some areas of three-dimensional shape.

The potentials of colour have been also exploited for painting some decorative elements and creating chiaroscuro effects on Ionic and Lesbian *kymàtia*, which decorate the lower and upper cornices of some sarcophagi of the Tetrarch period.

At the moment, there are insufficient polychrome traces for safe enough hypotheses to be formulated to enable the understanding of the message that colour could hypothetically have been intended to convey by, unlike what has been shown for the visual role and ideological meaning of iconography. However, limiting the analysis

to elements useful for the understanding of the adopted painting 'styles', some pictorial paradigms known and handed down from shop to shop over the centuries were identified. In other words, in places in which colour is preserved on the marble surface, some of the pictorial elements have always been rendered with the same colours and in the same way.

## ACKNOWLEDGEMENTS

I wish to thank the Soprintendenza Speciale per i Beni Archeologici di Roma who allowed me to study the polychromy on Roman marble sarcophagi and publish the images; the directors of the Museo Nazionale Romano, Dr. Rosanna Friggeri and Dr. Rita Paris that facilitated my research. I very grateful to Dr. Roberto Scopigno Director of the Visual Computing Lab ISTI-CNR in Pisa (<http://vcg.isti.cnr.it/>). All photos were taken by the author.



## REFERENCES

- AMBROGI A. 2008: "Polychrome Lastra mit dextrarum iunctio-Darstellung in der Catacomba di S. Panfilo in Rom", *Thiasos*, Festschrift für Erwin Pochmarski zum 65. Geburtstag, 43-56.
- ANDREAE B., SETTIS S. (eds.) 1983: *Colloquio sul reimpiego dei sarcofagi romani nel Medioevo*: Pisa, 5-12 September 1982, ser. Marburger Winkelmann-Programm, Marburger.
- ASR = Robert C. *et al.*, *Die Antiken Sarkophag-Reliefs*, Deutsches Archäologisches Institut, Berlin 1880.
- AUGUSTI S. 1967: *I colori pompeiani. Studi e documentazione*, Roma.
- BOURGEOIS B., JOCKEY PH. 2010: "Polychrome Hellenistic sculpture in Delos. Research of surface treatments of ancient marble sculpture. Part II", in V. BRINKMANN, O. PRIMAVESI, M. HOLLEIN (eds.): *Circumlitio*. The polychromy of antique and medieval sculpture, Proceedings of the Johann David Passavant Colloquium, Hirmer, Munich, 224-239.
- BRÉCOULAKI H. 2000: "Sur la *techné* de la peinture grecque ancienne d'après les monuments funéraires de Macédoine", *BCH* 124, 189-216.
- BRÉCOULAKI H., PERDIKATIS V. 2002: "Ancient painting on Macedonian funerary monuments, IV-III centuries BC: a comparative study on the use of colour", in M. A. TIVERIOS, D. S. TSI-AFAKIS (eds.): *Color in Ancient Greece: The Role of Color in Greek Art and Architecture 700-31 BC*. Proceedings of the Conference Held in Thessaloniki, 12-16 April 2000, 147-154.
- BRINKMANN V. 2004: "Colori e tecnica pittorica", in P. LIVERANI (ed.): *I colori del bianco. Policromia nella scultura antica*, De Luca Ed., Roma, 315-324.
- BRINKMANN V., WÜNSCHE U., WURNIG U. (eds.) 2004: *Bunte Götter: die Farbigekeit antiker Skulptur; eine Ausstellung der Staatlichen Antikensammlungen und Glyptothek München*. In Zusammenarbeit mit der Ny Carlsberg Glyptotek Kopenhagen und den Vatikanischen Museen, Rome, Munich, Glyptothek München.
- DEICHMANN F. W., BOVINI G., BRANDENBURG H. 1967: *Repertorium der christlichantiken Sarkophage. I. Rom und Ostia*, Wiesbaden.
- GERKE F. 1940: *Die christlichen Sarkophage der vor- konstantinischen Zeit*, Berlin.
- GÜTSCHOW M. 1938: "Das Museum der Prätextat-Katakomben", *Rendiconti, Atti della Pontificia Accademia Romana di Archeologia*, ser. III, Memorie, vol. IV, 26-267.
- KOCH G., SICHTERMANN H. 1982: *Römische Sarkophage*, G.H. Beck, München.
- LANGE U., SÖRRIES R. 1986: "Die polychromen Fragmente im Thermenmuseum zu Rom", *AW* 17, 2-22.
- LIVERANI P. 2010: "New Evidence on the Polychromy of Roman Sculpture", in V. BRINKMANN, O. PRIMAVESI, M. HOLLEIN (eds.): *Circumlitio*. The polychromy of antique and medieval sculpture, Proceedings of the Johann David Passavant Colloquium, Hirmer, Munich, 290-302.
- ØSTERGAARD J. S. 2010A: "The Sciarra Amazzon investigation: some archaeological comments", in J. S. ØSTERGAARD (ed.): *Tracking Colour: The polychromy of Greek and Roman sculpture in the Ny Carlsberg Glyptotek*. Preliminary Report 2, Copenhagen Polychromy Network, Ny Carlsberg Glyptotek, Copenhagen, 50-60. [Online publication]. Available: <http://www.trackingcolour.com/publications/preliminary-reports>.
- PANZANELLI R., SCHMIDT E.D., LAPATIN K. (eds.) 2008: *The colour of Life. Polychromy, in Sculpture from Antiquity to the Present*, Los Angeles: Exhibition Catalogue, J. Paul Getty Museum.
- PIETROGRANDE A. L. 1932: "Sarcofago policromo con raffigurazione bacchica", *Bullettino della Commissione archeologica comunale di Roma*, vol. LX, 177-215.
- REUTERSWÄRD P. 1960: *Studien zur Polychromie der Plastik. Griechenland und Rom*, Stockholm: Svenska Bokförlaget, 227-250.
- SAPPELLI M. 2002: "La lastra policroma con scene cristologiche del Museo Nazionale Romano. Osservazioni su struttura e tecnica", in G. KOCH (ed.): *Akten des Symposiums "Frühchristliche Sarkophage"*, Marburg 1999, Mainz am Rhein, 187-206.
- SARGENT M. L. 2011: "Metropolitan Roman Garland Sarcophagus", in J. S. ØSTERGAARD (ed.): *Tracking Colour: The polychromy of Greek and Roman sculpture in the Ny Carlsberg Glyptotek*. Preliminary Report 3, Copenhagen, 14-34. [Online publication]. Available: <http://www.trackingcolour.com/publications/preliminary-reports>.
- SARGENT M. L., THERKILDSEN R. H. 2010: "The Technical Investigation of Sculptural Polychromy at the Ny Carlsberg Glyptotek 2009-2010 – An Outline" in J. S. ØSTERGAARD (ed.): *Tracking Colour: The polychromy of Greek and Roman sculpture in the Ny Carlsberg Glyptotek*. Preliminary Report 2, Copenhagen Polychromy Network, Ny Carlsberg Glyptotek, Copenhagen, 11-26. [Online publication]. Available: <http://www.trackingcolour.com/publications/preliminary-reports>.

- SIOTTO E. 2013: Nuove tecnologie per lo studio della policromia sui sarcofagi romani: proposte per una standardizzazione metodologica, Ph.D. thesis, University of Pisa, Italy (<<http://vcg.isti.cnr.it/~siotto/thesis/index.html>>).
- SIOTTO E. 2017: La policromia sui sarcofagi romani. Catalogo e risultati scientifici. *Studia Archaeologica* 220. Foreword by Guntram Koch.
- SIOTTO E., PALMA G., POTENZIANI M., SCOPIGNO R. 2015: "Digital study and Web-based documentation of the colour and gilding on ancient marble artworks", in R. SCOPIGNO, G. GUIDI (eds.): *Digital Heritage International Congress 2015*, Granada September 28 - October 2, Vol. 1, IEEE, 239-246.
- SIOTTO E., CALLIERI M., DELLEPIANE M., SCOPIGNO R. 2015A: "The *Ulpia Domnina's* sarcophagus: preliminary report about the use of digital 3D model for the study and reconstruction of the polychromy", in *ASMOSIA X*, 911-922.
- SIOTTO E., DELLEPIANE M., CALLIERI M., SCOPIGNO R., GRATZIU C., MOSCATO A., BURGIO L., LEGNAIOLI S., LORENZETTI G., PALLESCHI V. 2015B: "A multidisciplinary approach for the study and the virtual reconstruction of the ancient polychromy of Roman sarcophagi", *Journal of Cultural Heritage* 16, 307-314.
- SKOV MØLLER A., THERKILDTSEN R. H. 2011: "On the high gloss polish of Roman sculpture" in J. S. ØSTERGAARD (ed.): *Tracking Colour: The polychromy of Greek and Roman sculpture in the Ny Carlsberg Glyptotek*. Preliminary Report 3, Copenhagen, 35-46. [Online publication]. Available: <http://www.trackingcolour.com/publications/preliminary-reports>.
- STERGAARD J. S. 2010: "The Copenhagen Polychrome Network: a research project on ancient Greek and Roman sculptural polychromy in the Ny Carlsberg Glyptotek", in V. BRINKMANN, O. PRIMAVESI, M. HOLLEIN (eds.): *Circumlitio*. The polychromy of antique and medieval sculpture, Proceedings of the Johann David Passavant Colloquium, Hirmer, Munich, 324-337.
- VERRI G., OPPER T., DEVIESE T. 2010: "The 'Treu Head': a case study in Roman sculptural polychromy", *The British Museum Technical Research Bulletin* 4, 39-54.
- WILPERT J. 1929-36: *I sarcofagi cristiani antichi*, Roma, I 1929, II 1932, III 1936, Città del Vaticano.
- ZANKER P., EWALD C.B. 2012: *Living with Myths: The Imagery of Roman Sarcophagi*, Oxford.