

# Island of Korčula - Importer and Exporter of Stone in Antiquity

---

**Parica, Mate; Borzić, Igor**

*Source / Izvornik:* **ASMOSIA XI, Interdisciplinary Studies on Ancient Stone, Proceedings of the XI International Conference of ASMOSIA, 2018, 985 - 993**

**Conference paper / Rad u zborniku**

*Publication status / Verzija rada:* **Published version / Objavljena verzija rada (izdavačev PDF)**

<https://doi.org/10.31534/XI.asmosia.2015/08.18>

*Permanent link / Trajna poveznica:* <https://um.nsk.hr/um:nbn:hr:123:749788>

*Rights / Prava:* [In copyright](#)/[Zaštićeno autorskim pravom.](#)

*Download date / Datum preuzimanja:* **2025-01-24**



*Repository / Repozitorij:*

[FCEAG Repository - Repository of the Faculty of Civil Engineering, Architecture and Geodesy, University of Split](#)



# ASMOSIA XI

Interdisciplinary Studies on Ancient Stone

## PROCEEDINGS

of the XI ASMOSIA Conference, Split 2015

Edited by Daniela Matetić Poljak and Katja Marasović



Interdisciplinary Studies on Ancient Stone  
Proceedings of the XI ASMOSIA Conference (Split 2015)

Publishers:

ARTS ACADEMY IN SPLIT  
UNIVERSITY OF SPLIT

and

UNIVERSITY OF SPLIT  
FACULTY OF CIVIL ENGINEERING,  
ARCHITECTURE AND GEODESY

Technical editor:  
Kate Bošković

English language editor:  
Graham McMaster

Computer pre-press:  
Nikola Križanac

Cover design:  
Mladen Čulić

Cover page:

*Sigma shaped mensa of pavonazzetto marble from Diocletian's palace in Split*

ISBN 978-953-6617-49-4 (Arts Academy in Split)

ISBN 978-953-6116-75-1 (Faculty of Civil Engineering, Architecture and Geodesy)

e-ISBN 978-953-6617-51-7 (Arts Academy in Split)

e-ISBN 978-953-6116-79-9 (Faculty of Civil Engineering, Architecture and Geodesy)

CIP available at the digital catalogue of the University Library in Split, no 170529005

Association for the Study of Marble & Other Stones in Antiquity

# ASMOSIA XI

Interdisciplinary Studies of Ancient Stone

Proceedings of the Eleventh International Conference of ASMOSIA,  
Split, 18–22 May 2015

Edited by  
Daniela Matetić Poljak  
Katja Marasović



Split, 2018

**Nota bene**

All papers are subjected to an international review.

The quality of the images relies on the quality of the originals provided by the authors.

# CONTENT

<b>PRESENTATION</b> .....	15
<b>NECROLOGY: NORMAN HERZ (1923-2013) by Susan Kane</b> .....	17
<b>1. APPLICATIONS TO SPECIFIC ARCHEOLOGICAL QUESTIONS – USE OF MARBLE</b>	
Hermaphrodites and Sleeping or Reclining Maenads: Production Centres and Quarry Marks <i>Patrizio Pensabene</i> .....	25
First Remarks about the Pavement of the Newly Discovered Mithraeum of the Colored Marbles at Ostia and New Investigations on Roman and Late Roman White and Colored Marbles from Insula IV, IX <i>Massimiliano David, Stefano Succi and Marcello Turci</i> .....	33
Alabaster. Quarrying and Trade in the Roman World: Evidence from Pompeii and Herculaneum <i>Simon J. Barker and Simona Perna</i> .....	45
Recent Work on the Stone at the Villa Arianna and the Villa San Marco (Castellammare di Stabia) and Their Context within the Vesuvian Area <i>Simon J. Barker and J. Clayton Fant</i> .....	65
Marble Wall Decorations from the Imperial Mausoleum (4 <sup>th</sup> C.) and the Basilica of San Lorenzo (5 <sup>th</sup> C.) in Milan: an Update on Colored Marbles in Late Antique Milan <i>Elisabetta Neri, Roberto Bugini and Silvia Gazzoli</i> .....	79
Sarcophagus Lids Sawn from their Chests <i>Dorothy H. Abramitis and John J. Herrmann</i> .....	89
The Re-Use of Monolithic Columns in the Invention and Persistence of Roman Architecture <i>Peter D. De Staebler</i> .....	95
The Trade in Small-Size Statues in the Roman Mediterranean: a Case Study from Alexandria <i>Patrizio Pensabene and Eleonora Gasparini</i> .....	101
The Marble Dedication of Komon, Son of Asklepiades, from Egypt: Material, Provenance, and Reinforcement of Meaning <i>Patricia A. Butz</i> .....	109
Multiple Reuse of Imported Marble Pedestals at Caesarea Maritima in Israel <i>Barbara Burrell</i> .....	117
Iasos and Iasian Marble between the Late Antique and Early Byzantine Eras <i>Diego Peirano</i> .....	123

Thassos, Known Inscriptions with New Data <i>Tony Kozelj and Manuela Wurch-Kozelj</i> .....	131
The Value of Marble in Roman <i>Hispalis</i> : Contextual, Typological and Lithological Analysis of an Assemblage of Large Architectural Elements Recovered at N° 17 Goyeneta Street (Seville, Spain) <i>Ruth Taylor, Oliva Rodríguez, Esther Ontiveros, María Luisa Loza, José Beltrán and Araceli Rodríguez</i> .....	143
<i>Giallo Antico</i> in Context. Distribution, Use and Commercial Actors According to New Stratigraphic Data from the Western Mediterranean (2 <sup>nd</sup> C. Bc – Late 1 <sup>st</sup> C. Ad) <i>Stefan Ardeleanu</i> .....	155
<i>Amethystus</i> : Ancient Properties and Iconographic Selection <i>Luigi Pedroni</i> .....	167
<b>2. PROVENANCE IDENTIFICATION I: (MARBLE)</b>	
Unraveling the Carrara – Göktepe Entanglement <i>Walter Prochaska, Donato Attanasio and Matthias Bruno</i> .....	175
The Marble of Roman Imperial Portraits <i>Donato Attanasio, Matthias Bruno, Walter Prochaska and Ali Bahadır Yavuz</i> .....	185
Tracing Alabaster (Gypsum or Anhydrite) Artwork Using Trace Element Analysis and a Multi-Isotope Approach (Sr, S, O) <i>Lise Leroux, Wolfram Kloppmann, Philippe Bromblet, Catherine Guerrot, Anthony H. Cooper, Pierre-Yves Le Pogam, Dominique Vingtain and Noel Worley</i> .....	195
Roman Monolithic Fountains and Thasian Marble <i>Annewies van den Hoek, Donato Attanasio and John J. Herrmann</i> .....	207
Archaeometric Analysis of the Alabaster Thresholds of Villa A, Oplontis (Torre Annunziata, Italy) and New Sr and Pb Isotopic Data for <i>Alabastro Ghiaccione del Circeo</i> <i>Simon J. Barker, Simona Perna, J. Clayton Fant, Lorenzo Lazzarini and Igor M. Villa</i> .....	215
Roman Villas of Lake Garda and the Occurrence of Coloured Marbles in the Western Part of “Regio X Venetia et Histria” (Northern Italy) <i>Roberto Bugini, Luisa Folli and Elisabetta Roffia</i> .....	231
Calcitic Marble from Thasos in the North Adriatic Basin: Ravenna, Aquileia, and Milan <i>John J. Herrmann, Robert H. Tykot and Annewies van den Hoek</i> .....	239
Characterisation of White Marble Objects from the Temple of Apollo and the House of Augustus (Palatine Hill, Rome) <i>Francesca Giustini, Mauro Brilli, Enrico Gallochio and Patrizio Pensabene</i> .....	247
Study and Archeometric Analysis of the Marble Elements Found in the Roman Theater at Aeclanum (Mirabella Eclano, Avellino - Italy) <i>Antonio Mesisca, Lorenzo Lazzarini, Stefano Cancelliere and Monica Salvadori</i> .....	255



Two Imperial Monuments in Puteoli: Use of Proconnesian Marble in the Domitianic and Trajanic Periods in Campania <i>Irene Bald Romano, Hans Rupprecht Goette, Donato Attanasio and Walter Prochaska</i> .....	267
Coloured Marbles in the Neapolitan Pavements (16 <sup>th</sup> And 17 <sup>th</sup> Centuries): the Church of <i>Santi Severino e Sossio</i> <i>Roberto Bugini, Luisa Folli and Martino Solito</i> .....	275
Roman and Early Byzantine Sarcophagi of Calcitic Marble from Thasos in Italy: Ostia and Siracusa <i>Donato Attanasio, John J. Herrmann, Robert H. Tykot and Annewies van den Hoek</i> .....	281
Revisiting the Origin and Destination of the Late Antique Marzamemi 'Church Wreck' Cargo <i>Justin Leidwanger, Scott H. Pike and Andrew Donnelly</i> .....	291
The Marbles of the Sculptures of Felix Romuliana in Serbia <i>Walter Prochaska and Maja Živić</i> .....	301
Calcitic Marble from Thasos and Proconnesos in Nea Anchialos (Thessaly) and Thessaloniki (Macedonia) <i>Vincent Barbin, John J. Herrmann, Aristotle Mentzos and Annewies van den Hoek</i> .....	311
Architectural Decoration of the Imperial Agora's Porticoes at Iasos <i>Fulvia Bianchi, Donato Attanasio and Walter Prochaska</i> .....	321
The Winged Victory of Samothrace - New Data on the Different Marbles Used for the Monument from the Sanctuary of the Great Gods <i>Annie Blanc, Philippe Blanc and Ludovic Laugier</i> .....	331
Polychrome Marbles from the Theatre of the Sanctuary of Apollo Pythios in Gortyna (Crete) <i>Jacopo Bonetto, Nicolò Mareso and Michele Bueno</i> .....	337
Paul the Silentary, Hagia Sophia, Onyx, Lydia, and Breccia Corallina <i>John J. Herrmann and Annewies van den Hoek</i> .....	345
Incrustations from Colonia Ulpia Traiana (Near Modern Xanten, Germany) <i>Vilma Ruppinić and Ulrich Schüssler</i> .....	351
Stone Objects from Vindobona (Austria) – Petrological Characterization and Provenance of Local Stone in a Historico-Economical Setting <i>Andreas Rohatsch, Michaela Kronberger, Sophie Insulander, Martin Mosser and Barbara Hodits</i> .....	363
Marbles Discovered on the Site of the Forum of Vaison-la-Romaine (Vaucluse, France): Preliminary Results <i>Elsa Roux, Jean-Marc Mignon, Philippe Blanc and Annie Blanc</i> .....	373
Updated Characterisation of White Saint-Béat Marble. Discrimination Parameters from Classical Marbles <i>Hernando Royo Plumed, Pilar Lapeunte, José Antonio Cuchí, Mauro Brillì and Marie-Claire Savin</i> .....	379

Grey and Greyish Banded Marbles from the Estremoz Anticline in Lusitania <i>Pilar Lapuente, Trinidad Nogales-Basarrate, Hernando Royo Plumed, Mauro Brilli and Marie-Claire Savin</i> .....	391
New Data on Spanish Marbles: the Case of <i>Gallaecia</i> (NW Spain) <i>Anna Gutiérrez García-M., Hernando Royo Plumed and Silvia González Soutelo</i> .....	401
A New Roman Imperial Relief Said to Be from Southern Spain: Problems of Style, Iconography, and Marble Type in Determining Provenance <i>John Pollini, Pilar Lapuente, Trinidad Nogales-Basarrate and Jerry Podany</i> .....	413
Reuse of the <i>Marmora</i> from the Late Roman Palatial Building at Carranque (Toledo, Spain) in the Visigothic Necropolis <i>Virginia García-Entero, Anna Gutiérrez García-M. and Sergio Vidal Álvarez</i> .....	427
Imperial Porphyry in Roman Britain <i>David F. Williams</i> .....	435
Recycling of Marble: Apollonia/Sozousa/Arsuf (Israel) as a Case Study <i>Moshe Fischer, Dimitris Tambakopoulos and Yannis Maniatis</i> .....	443
Thasian Connections Overseas: Sculpture in the Cyrene Museum (Libya) Made of Dolomitic Marble from Thasos <i>John J. Herrmann and Donato Attanasio</i> .....	457
Marble on Rome's Southwestern Frontier: Thamugadi and Lambaesis <i>Robert H. Tykot, Ouahiba Bouzidi, John J. Herrmann and Annewies van den Hoek</i> .....	467
Marble and Sculpture at Lepcis Magna (Tripolitania, Libya): a Preliminary Study Concerning Origin and Workshops <i>Luisa Musso, Laura Buccino, Matthias Bruno, Donato Attanasio and Walter Prochaska</i> .....	481
The Pentelic Marble in the Carnegie Museum of Art Hall of Sculpture, Pittsburgh, Pennsylvania <i>Albert D. Kollar</i> .....	491
Analysis of Classical Marble Sculptures in the Michael C. Carlos Museum, Emory University, Atlanta <i>Robert H. Tykot, John J. Herrmann, Renée Stein, Jasper Gaunt, Susan Blevins and Anne R. Skinner</i> .....	501
<b>3. PROVENANCE IDENTIFICATION II: (OTHER STONES)</b>	
Aphrodisias and the Regional Marble Trade. The <i>Scaenae Frons</i> of the Theatre at Nysa <i>Natalia Toma</i> .....	513
The Stones of Felix Romuliana (Gamzigrad, Serbia) <i>Bojan Djurić, Divna Jovanović, Stefan Pop Lazić and Walter Prochaska</i> .....	523
Aspects of Characterisation of Stone Monuments from Southern Pannonia <i>Branka Migotti</i> .....	537

The Budakalász Travertine Production <i>Bojan Djurić, Sándor Kele and Igor Rižnar</i> .....	545
Stone Monuments from Carnuntum and Surrounding Areas (Austria) – Petrological Characterization and Quarry Location in a Historical Context <i>Gabrielle Kremer, Isabella Kitz, Beatrix Moshhammer, Maria Heinrich and Erich Draganits</i> .....	557
Espejón Limestone and Conglomerate (Soria, Spain): Archaeometric Characterization, Quarrying and Use in Roman Times <i>Virginia García-Entero, Anna Gutiérrez García-M, Sergio Vidal Álvarez, María J. Peréx Agorreta and Eva Zarco Martínez</i> .....	567
The Use of Alcover Stone in Roman Times ( <i>Tarraco, Hispania Citerior</i> ). Contributions to the <i>Officina Lapidaria Tarraconensis</i> <i>Diana Gorostidi Pi, Jordi López Vilar and Anna Gutiérrez García-M.</i> .....	577
<b>4. ADVANCES IN PROVENANCE TECHNIQUES, METHODOLOGIES AND DATABASES</b>	
Grainautline – a Supervised Grain Boundary Extraction Tool Supported by Image Processing and Pattern Recognition <i>Kristóf Csorba, Lilla Barancsuk, Balázs Székely and Judit Zöldföldi</i> .....	587
A Database and GIS Project about Quarrying, Circulation and Use of Stone During the Roman Age in <i>Regio X - Venetia et Histria</i> . The Case Study of the Euganean Trachyte <i>Caterine Previato and Arturo Zara</i> .....	597
<b>5. QUARRIES AND GEOLOGY</b>	
The Distribution of Troad Granite Columns as Evidence for Reconstructing the Management of Their Production <i>Patrizio Pensabene, Javier Á. Domingo and Isabel Rodà</i> .....	613
Ancient Quarries and Stonemasonry in Northern Choria Considiana <i>Hale Güney</i> .....	621
Polychromy in Larisaeon Quarries and its Relation to Architectural Conception <i>Gizem Mater and Ertunç Denктаş</i> .....	633
Euromos of Caria: the Origin of an Hitherto Unknown Grey Veined Stepped Marble of Roman Antiquity <i>Matthias Bruno, Donato Attanasio, Walter Prochaska and Ali Bahadır Yavuz</i> .....	639
Unknown Painted Quarry Inscriptions from Bacakale at <i>Docimium</i> (Turkey) <i>Matthias Bruno</i> .....	651
The Green Schist Marble Stone of Jebel El Hairech (North West of Tunisia): a Multi-Analytical Approach and its Uses in Antiquity <i>Ameur Younès, Mohamed Gaied and Wissem Gallala</i> .....	659
Building Materials and the Ancient Quarries at <i>Thamugadi</i> (East of Algeria), Case Study: Sandstone and Limestone <i>Younès Rezkallah and Ramdane Marmi</i> .....	673

The Local Quarries of the Ancient Roman City of <i>Valeria</i> (Cuenca, Spain) <i>Javier Atienza Fuente</i> .....	683
The Stone and Ancient Quarries of Montjuïc Mountain (Barcelona, Spain) <i>Aureli Álvarez</i> .....	693
<i>Notae Lapidinarum</i> : Preliminary Considerations about the Quarry Marks from the Provincial Forum of <i>Tarraco</i> <i>Maria Serena Vinci</i> .....	699
The Different Steps of the Rough-Hewing on a Monumental Sculpture at the Greek Archaic Period: the Unfinished Kouros of Thasos <i>Danièle Braunstein</i> .....	711
A Review of Copying Techniques in Greco-Roman Sculpture <i>Séverine Moureaud</i> .....	717
Labour Forces at Imperial Quarries <i>Ben Russell</i> .....	733
Social Position of Craftsmen inside the Stone and Marble Processing Trades in the Light of Diocletian's Edict on Prices <i>Krešimir Bosnić and Branko Matulić</i> .....	741
<b>6. STONE PROPERTIES, WEATHERING EFFECTS AND RESTORATION, AS RELATED TO DIAGNOSIS PROBLEMS, MATCHING OF STONE FRAGMENTS AND AUTHENTICITY</b>	
Methods of Consolidation and Protection of Pentelic Marble <i>Maria Apostolopoulou, Elissavet Drakopoulou, Maria Karoglou and Asterios Bakolas</i> .....	749
<b>7. PIGMENTS AND PAINTINGS ON MARBLE</b>	
Painting and Sculpture Conservation in Two Gallo-Roman Temples in Picardy (France): Champlieu and Pont-Sainte-Maxence <i>Véronique Brunet-Gaston and Christophe Gaston</i> .....	763
The Use of Colour on Roman Marble Sarcophagi <i>Eliana Siotto</i> .....	773
New Evidence for Ancient Gilding and Historic Restorations on a Portrait of Antinous in the San Antonio Museum of Art <i>Jessica Powers, Mark Abbe, Michelle Bushey and Scott H. Pike</i> .....	783
Schists and Pigments from Ancient Swat (Khyber Pukhtunkhwa, Pakistan) <i>Francesco Mariottini, Gianluca Vignaroli, Maurizio Mariottini and Mauro Roma</i> .....	793
<b>8. SPECIAL THEME SESSION: „THE USE OF MARBLE AND LIMESTONE IN THE ADRIATIC BASIN IN ANTIQUITY”</b>	
Marble Sarcophagi of Roman Dalmatia Material – Provenance – Workmanship <i>Guntram Koch</i> .....	809

Funerary Monuments and Quarry Management in Middle Dalmatia <i>Nenad Cambi</i> .....	827
Marble Revetments of Diocletian's Palace <i>Katja Marasović and Vinka Marinković</i> .....	839
The Use of Limestones as Construction Materials for the Mosaics of Diocletian's Palace <i>Branko Matulić, Domagoj Mudronja and Krešimir Bosnić</i> .....	855
Restoration of the Peristyle of Diocletian's Palace in Split <i>Goran Nikšić</i> .....	863
Marble Slabs Used at the Archaeological Site of Sorna near Poreč Istria – Croatia <i>Đeni Gobić-Bravar</i> .....	871
Ancient Marbles from the Villa in Verige Bay, Brijuni Island, Croatia <i>Mira Pavletić and Đeni Gobić-Bravar</i> .....	879
Notes on Early Christian Ambos and Altars in the Light of some Fragments from the Islands of Pag and Rab <i>Mirja Jarak</i> .....	887
The Marbles in the Chapel of the Blessed John of Trogir in the Cathedral of St. Lawrence at Trogir <i>Đeni Gobić-Bravar and Daniela Matetić Poljak</i> .....	899
The Use of Limestone in the Roman Province of Dalmatia <i>Edisa Lozić and Igor Rižnar</i> .....	915
The Extraction and Use of Limestone in Istria in Antiquity <i>Klara Buršić-Matijašić and Robert Matijašić</i> .....	925
Aurisina Limestone in the Roman Age: from Karst Quarries to the Cities of the Adriatic Basin <i>Caterina Previato</i> .....	933
The Remains of Infrastructural Facilities of the Ancient Quarries on Zadar Islands (Croatia) <i>Mate Parica</i> .....	941
The Impact of Local Geomorphological and Geological Features of the Area for the Construction of the Burnum Amphitheatre <i>Miroslav Glavičić and Uroš Stepišnik</i> .....	951
Roman Quarry Klis Kosa near Salona <i>Ivan Alduk</i> .....	957
Marmore Lavdata Brattia <i>Miona Miliša and Vinka Marinković</i> .....	963
Quarries of the Lumbarda Archipelago <i>Ivka Lipanović and Vinka Marinković</i> .....	979

Island of Korčula – Importer and Exporter of Stone in Antiquity <i>Mate Parica and Igor Borzić</i> .....	985
Faux Marbling Motifs in Early Christian Frescoes in Central and South Dalmatia: Preliminary Report <i>Tonči Borovac, Antonija Gluhan and Nikola Radošević</i> .....	995
<b>INDEX OF AUTHORS</b> .....	1009

# ISLAND OF KORČULA – IMPORTER AND EXPORTER OF STONE IN ANTIQUITY

Mate Parica and Igor Borzić

Department of archaeology, University of Zadar, Zadar, Croatia  
(mateparica@gmail.com; igorborzic@gmail.com)

## Abstract

The island of Korčula is characterized by a physical geography that was a prerequisite for a stable population and an efficient land use throughout Antiquity. Roughly 30 villa rustica sites, dated mostly from the 1<sup>st</sup> to the 6<sup>th</sup> century AD, testify to this observation. Numerous exquisite archaeological finds directly illustrate the intensity of the economy on the estates and the material status of the owners. Accordingly, various types of stone material made its way to Korčula from local and regional sources or those much further afield. Stone was used to manufacture diverse products: architectural structural and decorative elements and monuments of various kinds. Apparently, local high-quality limestone material originated from Korčula and the surrounding archipelago. Unfortunately, exploitation on a practically industrial scale can be safely attested to only for the late medieval period onwards. The exploitation of stone during Antiquity is represented by specific archaeological contexts, namely the submerged operational quay at Sutvara and the underground gallery quarries at Sutvara, Kamenjak and Vrnik, which will be presented in greater detail.

## Keywords

Korčula, Antiquity, marble, quarry

The island of Korčula has excellent natural and geographical traits which were a prerequisite for sustaining a stable population throughout prehistoric and historical periods (DOKOZA 2009; FORETIĆ 1940; RADIĆ 2001, 25-47). The same is true for the entire period of classical antiquity, with the exception of the still elusive Greek colonies from the 6<sup>th</sup> and 3<sup>rd</sup> centuries BC (BRUNŠMID 1998; LISIČAR 1951; RENDIĆ-MIOČEVIĆ 1980, 229-250; SUIĆ 2001, 161-168). Numerous locations have been discovered and documented, featuring traces of inhabitation from a period spanning from the first to the sixth century AD (RADIĆ 2001, 25-47; BORZIĆ 2007; 2010, 27-42) (Fig. 1). Such sites are defined as estates, is the economy of which was primarily based on agricultural production – Roman *Villae Rusticae*. Such a determination is suggested by their position in the landscape, their size and the characteristic archaeological finds discovered at these sites. The intensity of settlement as well as the wealth displayed by the inhabitants is well illustrated by particular archaeological finds. These include, among other things, various stone products, including structural and decorative elements as well as monuments. Some of the estates mentioned above feature truly exceptional finds of stone products of various kinds. Their owners were in a position to procure for and embellish their residences with exquisite pieces of décor. The island of Korčula is thus included

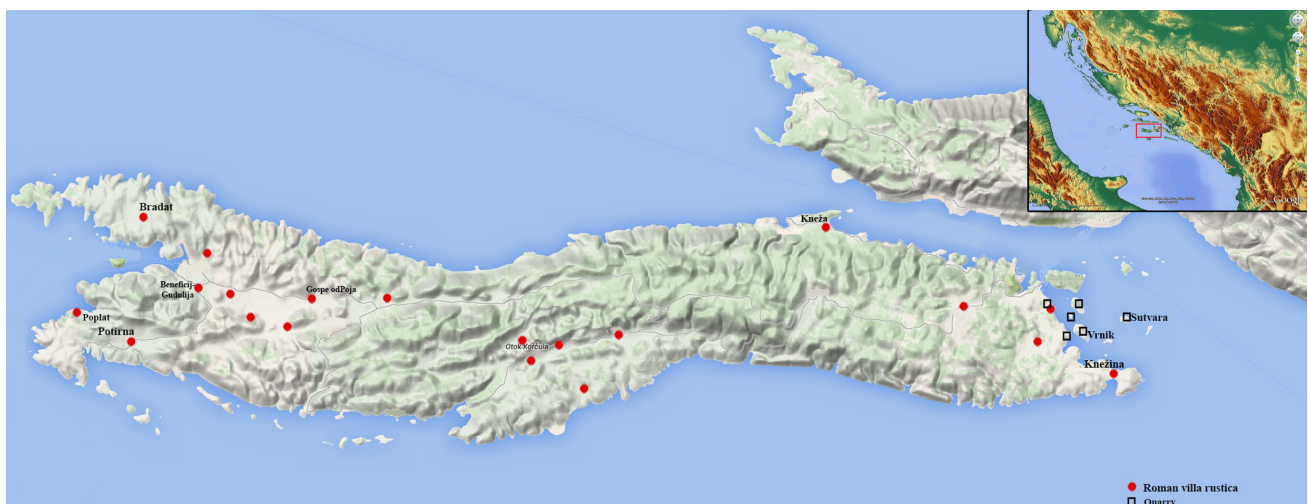


Fig. 1. Map of the island of Korčula with major archaeological sites



Fig. 2. Stone monuments from the Beneficij-Gudulija site

in the network of the supply and distribution of luxury stone material and stonemasonry products from leading production centers in classical antiquity.

Although research into villa sites is still largely deficient, some of sites stand out for the exceptional artifacts they have yielded. It is not surprising that such sites are mostly situated on the wealthy, western side of the island. Beneficij - Gudulija was, actually, the site of trial research. The excavations produced the remains of Roman architecture and relatively numerous portable finds dated to the period between the 1<sup>st</sup> – 6<sup>th</sup> centuries (NOVAK 1954, 46-48). A relevant find for our paper is a richly decorated marble composite capital. The capital measures 41 cm in height and the diagonal across the entire abacus measures 70 cm (Fig. 2). The capital itself is by all accounts a product of developed Roman antiquity, according to the style and production technique. A column base was also found in the same context as the capital (the measurements are, unfortunately, unknown). Nevertheless, the entire assemblage testifies to the existence of an exquisite, possibly sacred, building at this site. This conclusion seems to be corroborated by the finds of two marble plaques from the same site. These finds lead us to believe that the walls or floors of this building or perhaps a different one were dressed in marble executed in the *opvs sectile* technique (Fig. 2).

Potirna - Mirje is the site of an extremely wealthy estate. Admittedly, the site was never researched but data to make such a claim abound. Potirna is the finding site of several inscriptions. The remains of a Roman cistern are still visible and the bottom is executed in the *opus*

*tesselatum* technique. A plain marble votive inscription is particularly significant. The text informs us that a temple (*templum*) has been erected, furnished with a Venus Pelagia statue (*signvm*) accompanied by a titled marble beam (OSTOIĆ 1878, 39; CIL III 3066/10083) (Fig. 3). The exact location of this religious complex is unknown. Nevertheless, the finding site of the inscription as well as a fragment of red – green painted mortar could suggest that the complex was located somewhere in the vicinity of the still visible cistern mentioned above. Furthermore, these finds suggest that a luxuriously decorated building existed at this site. Over the course of the next few centuries the estate maintained a high profile. Several sarcophagi fragments found at the site testify to this (Fig. 3). One sarcophagus is built from Proconnesian marble and the find is built into the altar of the Sv. Juraj [St George] church in Potirna. It is possible to reconstruct the frontal side of the coffin: vertical strigils frame the central inscription panel (tabula ansata form) richly decorated with plant motifs. This type of sarcophagus, undoubtedly dated to the 3<sup>rd</sup> century AD, can be classified among non-standard Salona sarcophagi modeled after Proconnesian marble products (CAMBI 2010, 31, cat. no. 5). The same period and model can be suggested for a sarcophagus fragment with vertical strigils, the upper zone decorated with a rather rustic string of astragal patterns and Lesbian kyma of the same quality as the astragal. This type of sarcophagus commonly features a pelta-shaped inscription panel. Unfortunately, the fragment is incomplete and this typological feature cannot be confirmed (analogies at CAMBI 2010, 27, kat. br. 37 and 130).

The next location relevant for our subject is a Roman villa at the Bradat – Mirje site. The site has never been excavated. Nevertheless, based on the available information, it falls into the category of one of the most prosperous estates on the island. Older records mention numerous finds of Roman architecture. Some finds feature prominently among these, such as mosaic floors (OSTOIĆ 1953, 12 – 13; OREB 1972, 125), two funerary *stelae*, obviously products of some already renowned workshop, probably from Salona, and two particularly interesting fragments of marble sculpture (OSTOIĆ 1878, 38; OREB 2003) (Fig. 4). The first fragment features a neck, torso and some form of garment. According to Ostoić it is a lion hide which falls over the chest by way of the right arm. The second fragment features an upper torso without the head or arms. A garment is visible, though, covering the right shoulder and lower torso leaving the chest bare. Considering that the sculptures are fragmented and known only through descriptions and sketchy drawings, it is not possible to attribute them with any level of certainty. Nevertheless, based on the little information available, the religious character of the sculptures can be suggested. Furthermore, the first



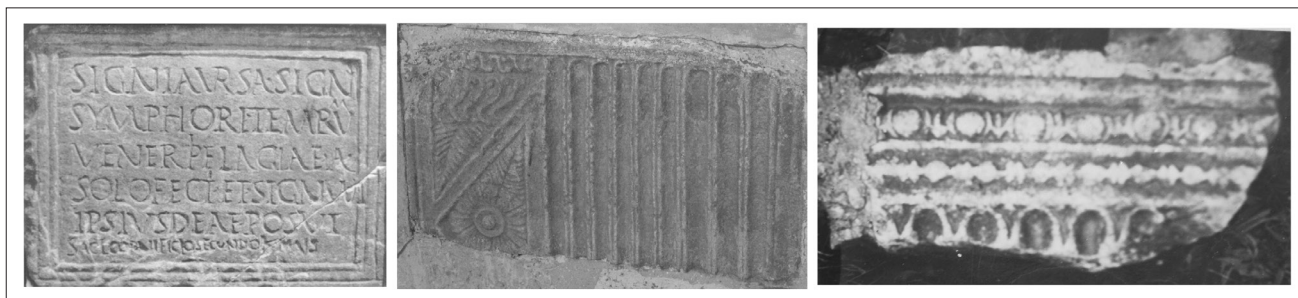


Fig. 3. Stone monuments from the Potirna-Mirje site

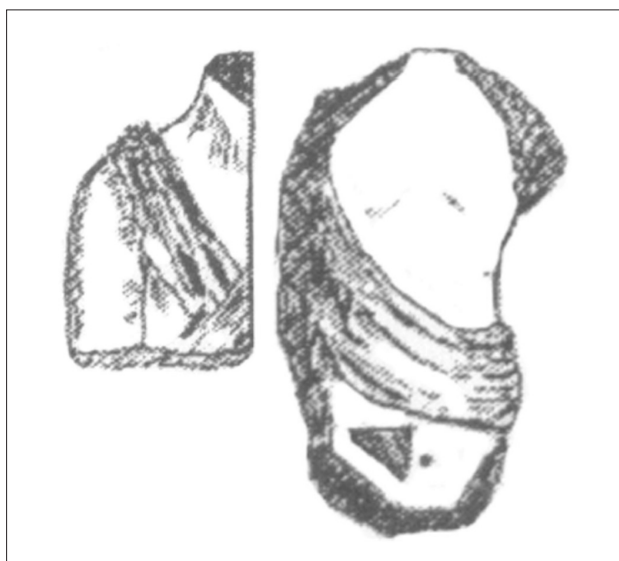


Fig. 4. Stone monuments from the Bradat-Mirje site

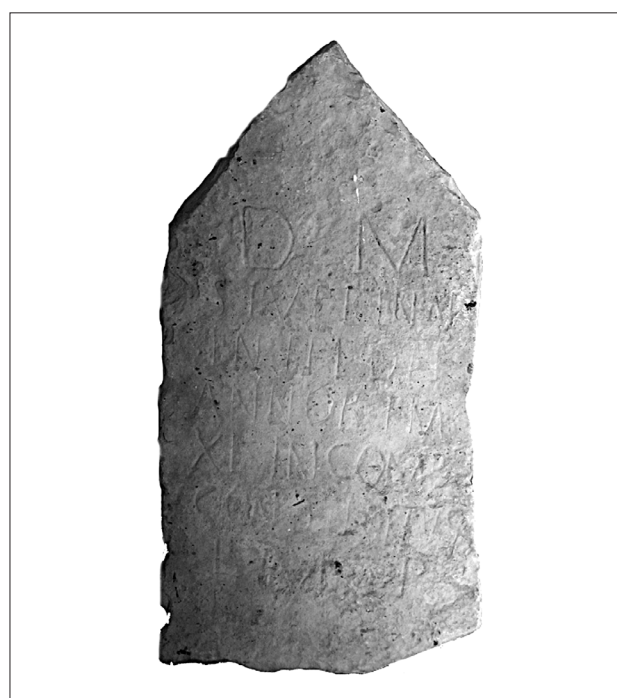


Fig. 5. Funeral stela from the Poplat-Mirje site (photo: I. Borzić)

fragment clearly features the depiction of Heracles, while the second features a figure depicted in divine nudity.

An interesting antithesis to the stone monuments mentioned above and found on this part of the island is a completely preserved burial monument, made from local limestone and utterly rustic in form. It is probably a direct product crafted by a certain Poetus (*Poetvs*). He erected the monument to his fellow slave Severina (CIL III 10091; LISIČAR 1985, 128) (Fig. 5). The monument was discovered at the Poplat – Mirje site. According to the available information, the site also featured a mosaic floor.

A similar site is documented at the opposite side of the island – the Kneža site. The site featured a cistern with mosaic flooring. Green marble plaques are also mentioned, suggesting the presence of a luxurious building situated on the coast of the Pelješac channel (RADIĆ 1887, 75; 1892a, 78-79).

Several funerary monuments should be noted in the context of Korčula as a consumer of imported stone products. The products were imported from well-established coastal stonemasonry production centers and they include finds from sites such as Prapatna – Mirje (CIL

III 3069, 3070/10085) and Čara – Sutudar (CIL III 3072, ILJUG 25., 411). Generally speaking, the stone products discovered at these sites are a vivid reminder of the wealth certain estates displayed. It is also evident that this population kept track of fashion trends. The trends were channeled to this island – a rural environment – through intermediaries such as Salonae, as well as other eastern Adriatic stonemasonry distribution centers.

The sheer number of settlement sites on the island, the architecture of various kinds and numerous finds all suggest that apart from the import of stone products and as master stonemasons, a stone-related economy must have developed locally during the period of Roman antiquity. Stone production was focused primarily on the demand of the local market for building material as well as other commodities. The answer to these questions lies in the still open debate over whether numerous stone quarries in the eastern part of Korčula

Island and the surrounding islets originated in the period of Roman antiquity. The quarries have been discussed in scholarly literature since long ago. It should not be surprising that numerous studies have been dedicated to this subject since the late 19<sup>th</sup> century (RADIĆ 1892; GJIVOJE 1970; FSKOVIĆ 1955; 1971; FORETIĆ 2004; DOKOZA 2009; PARICA 2014; RUSSELL, GLICKSMAN 2015). Almost all the authors emphasize the long tradition of stone masonry, especially in the late medieval and early modern periods. However, the problem remained how properly to identify quarrying activities dating from the Roman period. The basic problem is in the uncertain dating of underground gallery quarries found on the islets of Sutvara, Kamenjak and Vrnik. Gallery quarries were formed because surface layers with low quality material are positioned above the high quality raw material. In open-pit quarries the surface layer is removed by the same technique as the high quality rock mass. However, if the surface layer of low quality rock is too thick, removal from the surface is unsustainable. Explosives were used in early modern quarries to remove the surface layer of unusable stone raw material. Upon removal, the stone was quarried by hand tools. After the discovery of gunpowder, the rock mass of high quality was approached from the slope side, directly into the quality raw material. Once the appropriate vein is targeted, the exploitation continues using mining methods. Gallery mines originated in ancient Egypt during the period of the Middle Kingdom. The mines are located on hill and mountain slopes, as deep as 200 m into the hill. Pylons were formed from unexcavated rock mass. The extraction technique of the majority of blocks is identical to what is practiced in open mines (WAELEKENS 1992, 6). The gallery quarrying technique was employed widely across the entire Mediterranean. Examples preserved to this day include Bibémus - Aix-en-Provence in France (STOREMYR 2006), El-Dibabi-yai Zawiyat al-Sultan in Egypt (HARRELL, STOREMYR 2009, 11; HORI 2010, 82), and La Savinosa and Coves del Llorito in Spain (GUTIÉRREZ GARCIA-MORENO 2009, 184, 187). Recently, a stone quarry of the same type dating to the Roman period was discovered in Zvornik, Bosnia and Hercegovina (RIŽNAR, JOVANOVIĆ 2006). Gallery quarries are rather rare in the Dalmatian area. An Antique quarry on the St. Ilija hill slope near Trogir features a preserved small part of the quarry with a frontal approach to the rock mass and all the elements characteristic for the gallery quarrying technique (PARICA 2014, 84). The only other finding sites of gallery quarries in Dalmatia are the islets in the vicinity of Korčula – Sutvara, Kamenjak and Vrnik (GJIVOJE 1970, 71).

Sutvara is a small island in the Korčula archipelago with an area covering 9 ha and the altitude at the highest point is 38 m. Rock raw material contains a surface layer of low quality cracked limestone 4 m thick. Underneath

is a compact layer of white limestone of excellent quality. Two larger and a few smaller trial quarries can be discerned at Sutvara. The first quarry is positioned on the northern coast where an artificially formed cliff is clearly visible, stretching irregularly for about 70 m. Various techniques of exploitation are documented at the quarry, such as common trenches, drilling using the “hole to hole” technique, individual trenches and the use of gunpowder. F. Radić documented two gallery type quarries in 1891, one still visible today. He claimed that the other quarry was positioned on the northern side of the hill, meaning precisely at the area in question (RADIĆ 1891, 51). M. Gjivoje mentions three spots at Sutvara where mining techniques are evident: on the northeastern side of the island by the sea and at two other spots located in the center of the island (GJIVOJE 1970, 71). The remains in the quarry area suggest that a gallery type quarry operated in this area. Fig. 6 clearly shows traces of rock separation by the drilling of a series of holes with a mechanized drill. However, the remains of a gallery quarry are discernible underneath. This demonstrates that a gallery type quarry was in operation at this very location, precisely as claimed by F. Radić and M. Gjivoje. Quarries with traces of various exploitation techniques were commonly in use throughout different periods. The analysis of stratigraphic relations between different mining techniques demonstrates how earlier techniques cut into the later ones and disturb them in the process. The demarcation of earlier and later exploitation patterns is of extreme importance because the chronological relations between them are thus available for analysis. The Fig. 6, 1 shows a segment of the northern quarry at Sutvara where three techniques of rock exploitation are discernible. Trenches and wedging traces descending under the base rock are visible in no. 1. These are probably the traces of the earliest phase when a gallery quarry was the exclusive mining technique in this area. Curving of the trenches and tool traces suggest frontal trenching, which is characteristic only of gallery pits. Since the two other techniques have obliterated the gallery quarry, this is the earliest system of exploitation still visible.

The procedure which commenced the devastation of gallery quarry is an early modern “hole to hole” mechanical drilling technique. Following the drilling, the blocks were already separated from the rock mass. Fig. 6, 2 clearly shows three rows separated by the technique described above. The final technique visible in Quarry 1 is rock breaking using explosives and the “hole to hole” technique. The cliff was completely destroyed in the process. The first phase of this process is to drill several holes, either mechanically or by hand, into the cliff side. Afterwards, explosive charges are set into the holes and the detonation breaks the rock (Fig. 6, 3). Amorphous blocks fall to the ground where they are reduced to the desired size.



Fig. 6. Traces of a quarry on the north-eastern part of Sutvara Island with various quarrying techniques (photo: M. Parica)



Fig. 7. Gallery quarry in the central part of Sutvara Island (photo: M. Parica)



Fig. 8. Traces of rock exploitation in the gallery quarry on Sutvara Island (photo: M. Parica)

The final two phases of exploitation in Quarry 1 can be dated to the Modern period, roughly the last 120 years, definitely after F. Radić visited the site in 1891.

The gallery quarry in the central area of Sutvara Island is the most representative example of this type of quarry in Croatia. The underground gallery is 25 m long, 20 m wide and the maximum height is 6 m. The information concerning the quarry height should be taken with caution. The quarry bottom is covered with spoil rock and at some places it is evident that the depth is greater than commonly assumed. The entrance section of the quarry is irregular. However, drill holes are visible in this part, representing the use of explosives. It is difficult to determine the extent of ceiling disturbance in this process. Nevertheless, it is evident that this spacious gallery stretched further than previously assumed. The rock mass inside the gallery is extremely compact without a trace of geological incursions, including in the ceiling.

The gallery is not supported by pylons, which are quite common in quarries such as this. The ceiling is concave in shape, formed in a compact rock mass and sufficiently stable for the danger of collapse to be minimal. All visible gallery cliffs, including the ceiling, feature tool marks and traces of techniques employed to separate the rock blocks. Traces of vertical and horizontal trenches are also visible as well as zones where blocks were separated from the base. They are also visible on lateral cliffs and ceilings. Each block is separated from the base in the following manner: a "V" shaped wedge slot is carved inside a common trench (dug using a pick hammer). The wedge slot spans the entire block width. Iron wedges are inserted in the wedge slot. The wedges are hammered, the block cracks, separating it from the base rock in the process.

The expansion of the gallery is defined based on marks at the upper gallery edge (Fig. 8). The base rock was penetrated at these spots by another row, after which



Fig. 9. Stratigraphy of the spoil mound inside the gallery quarry on Sutvara Island (photo: M. Parica)

the flat area was lowered, similar to the open-pit mines. This is visible in the central part of the gallery where a smaller section, regular in plan, is located. Lateral walls contain clearly discernible tool marks which surround the larger blocks (2.5 m wide and 1.5 m high).

The central section of the hall features a quarry segment that is considerably deeper than the quarry bottom. This is perhaps the final phase of the original gallery quarry when the rock was extracted in a single place from the deep, and spoil was scattered on the remaining parts of the gallery. This also might be the reason why the bottom of the original quarry is not visible.

It is precisely at the edge of the lowest section of the quarry where the refuse material is clearly visible enabling stratigraphic analysis of the spoil mound (Fig. 9). Three layers are clearly discernible. The uppermost layer is a mixture of gravel and gray-brown soil, 60 cm thick. The second layer contains dark-brown sterile soil, about 10 cm thick which is the result of a prolonged inactivity on the gallery. Finally, the lowermost layer consists of a mixture of gravel and rock powder. This composition of spoil material is characteristic of trenches dug using pick hammer or hammer and wedge. The thickness of the final layer is impossible to determine

because it stretches under the subsequently deposited material. It is possible that the lowermost (the earliest) layer is representative of the rock exploitation at the lowest part of the quarry, when the material was deposited in the immediate vicinity. A prolonged hiatus is evident following this sequence, clearly demonstrated in the layer of dark soil characteristic for speleological objects during periods when either human or natural activity is absent for hundreds of years. The upper layer probably represents the refuse material from the final phase of rock exploitation at the site. To be more precise, this activity can be dated to the Modern period when the entrance section of the gallery was damaged by dynamite. The stone debitage contained in the layer suggests that the gallery quarry hall was used for finer block processing. Actually, the gallery is an ideal shelter from the elements such as rain, sun, wind or the cold.

A particular feature of gallery as well as later medieval quarries is the type of wedge slots used for final block separation. The quarries across the Mediterranean often feature a single wedge slot used to separate the block from the base rock. The galleries at Korčula all feature the same type of block separation i.e. an elongated “V” shaped wedge slot carved into the trench bottom. Finally, massive wedges are placed and hammered until the block cracks. The fracture is concave in most cases. However, the cause is not the rock mass structure but the form and shape of lateral trenches. The force resulting from hammering the wedges into the rock mass runs precisely in the direction of the placed wedges. However, the rock mass cracks at the weakest point i.e. in the direction where there is no contact with the lateral sides. Therefore, the force is distributed by the direction of lateral trenches.

As well as on Sutvara, gallery quarries are documented on Kamenjak and Vrnik islands (GJIVOJE 1970, 71). However, the latter are partially or completely disturbed by later quarrying activities. The oldest inhabitants still remember the gallery quarries destroyed by subsequent exploitation<sup>1</sup>.

The dating of quarries at Korčula archipelago islands is extremely problematic for several reasons. The first problem is an absolute lack of archaeological material directly connected to the quarries. The second problem consists of the small discrepancies in the block extraction technique when compared to gallery quarries from Antiquity in the Mediterranean. First and foremost, the discrepancies include the V-shaped wedge slots, concave ceilings and the absence of pylons supporting the ceiling. However, there are several arguments to suggest that the quarries are to be dated to the period of Roman antiquity (earlier and late periods). Firstly, it should be pointed out that

1 The information provided orally by the last Vrnik stonemason, I. Foretić.



Fig. 10. Submerged harbour installation on the northern part of Sutvara Island (photo: M. Parica)

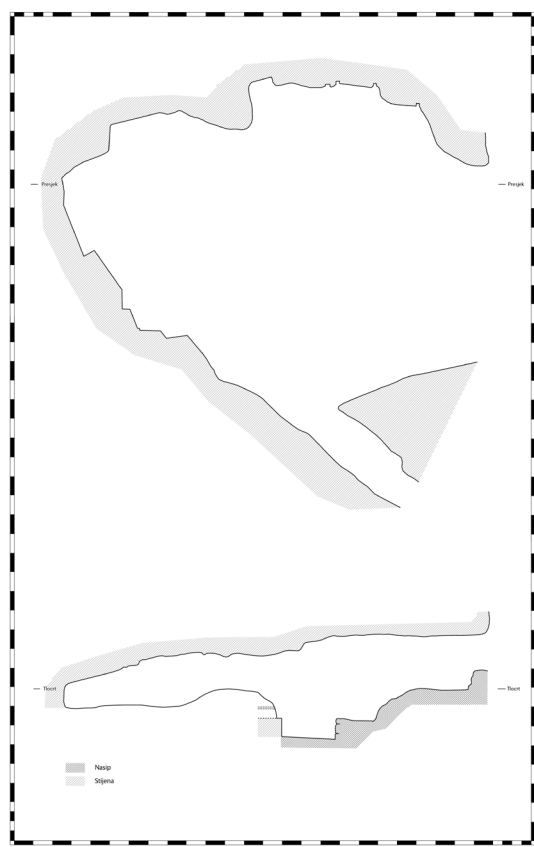


Fig. 11. Plan of the gallery quarry on Sutvara Island (author: M. Parica)

gallery quarries were used in Roman antiquity on a massive scale. Perhaps the most important argument implying a Roman antiquity dating for the quarries is the harbor installation found at Sutvara. The fact that the installation is submerged 2 m below the present sea level strongly suggests a Roman antiquity date for the quarries (Fig. 10, 12). Furthermore, the fact of the matter is that gallery quarries do not cut any other exploitation technique, while, conversely, all other techniques cut the gallery phases.

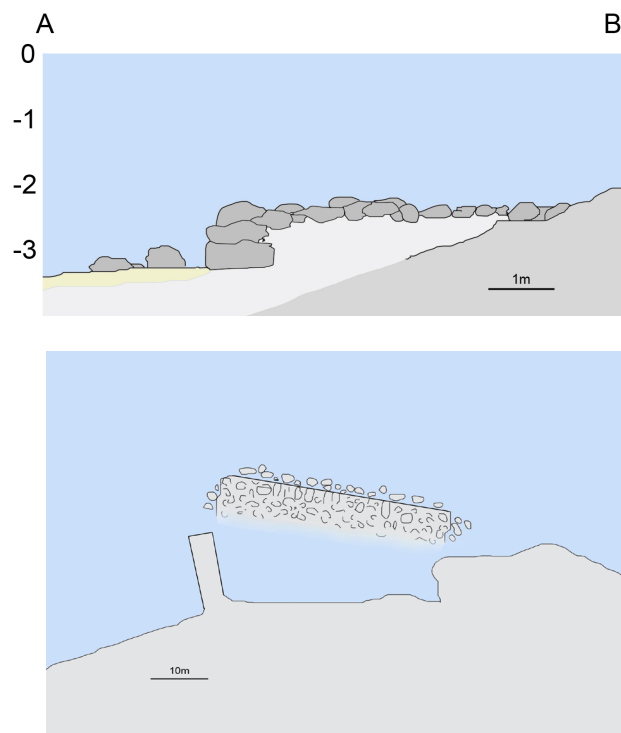


Fig. 12. Plan of the Submerged harbour installation on the northern part of Sutvara Island (author: M. Parica)

Generally speaking, the rock quarrying tradition in this part of Korčula is beyond any doubt. One only has to look and see certain parts of the landscape literally “gnawed” away. It is still not clear, though, how long this tradition stretches into the past. But the arguments suggested here in favor of a Roman antiquity date outweigh the argumentation based solely on the typology of quarrying techniques. Even if stratigraphic relations, regularly placing the exploitation of gallery quarries on the Korčula islets at the temporal bottom, are excluded, for they are not necessarily of Roman antiquity date, the submerged coastline at Sutvara certainly suggests such a date. A lot of research was conducted recently to determine the relation between coastline movements and archaeological sites. Based on that research, the dating of the Sutvara submerged coastline to the Roman antiquity is certainly plausible (SURIĆ, 2009, 181-199; LAMBECK *et al.* 2010; ANTONIOLI *et al.* 2007, 2463-2486; FAIVRE *et al.* 2010, 91-99).

Several indirect arguments could suggest a Greek or Roman antiquity date for quarrying activities and for certain isolated quarries in this part of the island. The intensive dynamics of life at the island is suggested by two possible Greek colonies mentioned above, wealthy Roman estates with the Velo polje/Knežina site as the main representative (RADIĆ 1887a, 10-24; ZANINOVIĆ 1967, 360-361) and, finally, a substantial late Roman antiquity phase represented by several early Christian cult buildings (Majsan, Lučnjak, Sutvara and Gubavac) and a

significant Porphyrogenitus *castron* (FISKOVIĆ 2001, 52-74; DOKOZA 2009, 33-35). The nature, scale and scope of quarrying activities are difficult to determine at this point. Were they directed at meeting exclusively local demands or, was it, even at that period, directed at the wider market, as is the case with later medieval and early modern periods. Furthermore, were these activities directed at the production of building material or some more ambitious products such as sculptures, as is the case, for instance, with the Brač or Trogir quarries (CAMBI 2005; PARICA 2014). Fragments of architectural decoration and funerary monuments found at Gradac near Posušje site (FIALA PATCH 1895, 259-260), supposedly made from Korčula stone, are particularly interesting in the context of this paper. Unfortunately, by the time this paper was submitted we had been unable to track these finds, analyze them, and possibly determine their provenance. It is precisely such issues that point to further directions for research into Korčula quarries that arouse particular scholarly curiosity.

## BIBLIOGRAPHY

- ANTONIOLI F. *et al.* 2007: "Sea level change during Holocene from Sardinia and northeastern Adriatic (Central Mediterranean Sea) from archaeological and geomorphological data", *Quaternary Science Reviews* 26: 2463-2486.
- BORZIĆ I. 2007: Otok Korčula. Primjer romanizacije dalmatinskog otoka, magistarska radnja, neobjavljena građa, Sveučilište u Zadru, Zadar.
- BORZIĆ I. 2010: "Značajke naseljenosti otoka Korčule u antičko doba", *Arheološka istraživanja na srednjem Jadranu*, Izdanja Hrvatskog arheološkog društva 26, Split, 27-42.
- BRUNŠMID J. 1998: Natpisi i novac grčkih gradova u Dalmaciji, Split.
- CAMBI N. 2005: Kiparstvo rimske Dalmacije, Split.
- CAMBI N. 2010: Sarkofazi lokalne produkcije u rimskoj Dalmaciji, Split.
- DOKOZA S. 2009: Dinamika otočnog prostora, Split.
- FAIVRE S., FUACHE E., KOVAČIĆ V., GLUŠČEVIĆ S., 2010: "Geomorphological and archaeological indicators of Croatian shoreline evolution over the last two thousand years", *GeoActa, Special Publication* 3, Bologna, 91-99.
- FIALA F., PATSCH C. 1895: Untersuchungen römischen Fundorte in der Herzegovina, *Wissenschaftliche Mitteilungen der osnosch-Herzegovinischen Landesmuseums*, Wien 1895, 257-283.
- FISKOVIĆ C. 1955: Prvi poznati dubrovački graditelji, Dubrovnik.
- FISKOVIĆ C. 1971: Ranokršćanske crkvice na Sutvari, Gubavcu i Lučnjaku kraj Majsana u Pelješkom kanalu, *Vjesnik za arheologiju i historiju dalmatisku* 65-67, Split 1971, 141-168.
- FISKOVIĆ I. 2001: "Prilozi arheološkoj topografiji Pelješkog kanala", *Arheološka istraživanja na otocima Korčuli i Lastovu*, Izdanja HAD-a 20, Zagreb, 51-74.
- FORETIĆ V. 1940: Otok Korčula u srednjem vijeku do godine 1420., *Djela JAZU*, Knjiga 36, Zagreb.
- FORETIĆ D. 2004: "Kamen na čekanju", in BOŠNJAK M. (ed.), *Otok Korčula*, Zagreb, 67-74.
- GJIVOJE M. 1970: "Antikni kamenolomi na korčulanskim otocima", *Zbornik otoka Korčule* 1, Zagreb, 68-75.
- GUTIERREZ GARCIA-MORENO A. 2009: Roman Quarries in the Northeast of Hispania (Modern Catalonia), Tarragona.
- HARRELL J. A., STOREMYR P. 2009: "Ancient Egyptian Quarries – An Illustrated Overview", in ABU-JABER N., BLOXAM E., DEGRYSE P., HELDAL T. QUARRYSAPES (eds.): *Ancient stone quarry landscapes in the Eastern Mediterranean*, Geological Survey of Norway, Special Publication 12, 7-50.

- HORI Y. 2010: "Ancient Quarry Techniques in the Ptolemaic Period in the Middle Egypt", *Bollettino di Archeologia on line I*, 80-86.
- LAMBECK K. *et al.* 2010: "Paleoenvironmental Records, Geophysical Modeling, and Reconstruction of Sea-Level Trends and Variability on Centennial and Longer Timescales", in CHURCH J. A., WOODWORTH P. L.; AARUP T., WILSON W. S. (eds.): *Understanding Sea-Level Rise and Variability*, Wiley-Blackwell.
- LISIČAR P. 1951: *Crna Korkira i kolonije antičkih Grka na Jadranu, Skopje.*
- LISIČAR P. 1958: "Bilješke o rimskim natpisima s otoka Korčule", *Vjesnik za arheologiju i historiju dalmatinsku LX*, Split, 125-129.
- NOVAK G. 1954: "Arheološka istraživanja na otocima Korčuli i Hvaru u 1951. i 1952. godini", in *Ljetopis JAZU* 59, Zagreb, 41-54.
- OREB F. 1972: "Pregled arheoloških lokaliteta i nalaza na području Vele Luke i neke mogućnosti istraživanja i prezentacije", *Zbornik otoka Korčule 2*, Zagreb, 123-130.
- OREB F. 2003: "Arheološka baština na teritoriju općine Blato", in ŠEPAROVIĆ T. (ed.) *Zbornik radova Blato do kraja 18. stoljeća*, sv. 1, Blato, 9-62.
- OSTOIĆ N. 1878: *Compendio storico dell'isola Curzola*, Zadar.
- OSTOIĆ N. 1953: *Memorie relative alla fondazione della Contrada di Vallegrande nell'isola di Curzola compilate da Nicola Ostoich di Blatta l'anno 1852*, Dubrovnik.
- PARICA M. 2014: *Arheološki tragovi kamenarstva u Dalmaciji od prapovijesti do kraja srednjeg vijeka*, doktorska disertacija, Sveučilište u Zadru, Zadar.
- RADIĆ F. 1887: "Razne starinske vijesti", *Bulletino di archaeologia e storia Dalmata X*, Split, 75.
- RADIĆ F. 1887a: "Ostanci rimske naselbine u selu Lumbardi na otoku Korčuli", *Starinar SADI/1887*, Beograd, 10-24.
- RADIĆ F. 1892: "Ruševine staro-kršćanske crkvice Sv. Barbare na otočiću Sutvari prema selu Lumbardi na Korčuli", *Vjesnik Arheološkog muzeja u Zagrebu*, Vol.14 No.1, 50-52.
- RADIĆ F. 1892a: "Ostanci starorimskog kupališta u luci Banja kod grada Korčule", *Viestnik hrvatskog arheologičkog društva 3*, Zagreb, 77-79.
- RADIĆ D. 2001: "Topografija otoka Korčule", *Arheološka istraživanja na otocima Korčuli i Lastovu*, Izdanja HAD-a 20, Zagreb, 25-50.
- RADIĆ D. 2005: "Potirna" in ŠEPAROVIĆ T. (ed.): *Zbornik radova Blato do kraja 18. stoljeća*, sv. 3, Blato, 23-32.
- RENDIĆ MIOČEVIĆ D. 1980: "O knidskoj kolonizaciji Korčule", *Diadora 9*, Zadar, 229-250.
- RIŽNAR I., JOVANOVIĆ D. 2006: "Stone material of regional provenance from Sirmium", *Starinar 56*, Beograd 2006, 139-151.
- RUSSELL B., GLICKSMAN K. 2015: *Noviji radovi na rimskim kamenolomima blizu Korčule i na Braču*, *Vjesnik za arheologiju i historiju dalmatinsku 108*, Split 2015, 223-244.
- STOREMYR P. 2006: *Les Carrières de Bibémus*, Aix-en-Provence, France.
- SUIĆ M. 2001: "Κόρκυρά η Μελαινα", *Arheološka istraživanja na otocima Korčuli i Lastovu*, Izdanja HAD-a 20, Zagreb, 161-168.
- ZANINOVIĆ M. 1967: "Neki primjeri smještaja antičkih gospodarskih zgrada na obalno-otočkom području Dalmacije", *Arheološki radovi i rasprave IV.V*, Zagreb, 357-372.
- WAEELKENS M. 1992: "Bronze Age Quarries and Quarrying Techniques in the Eastern Mediterranean and the Near East", in: M. WAEELKENS, N. HERZ AND L. MOENS (eds.): *Ancient Stones: Quarrying, Trade and Provenance*, Leuven University Press, 5-20